

RAB9A Antibody (monoclonal) (M01)

Mouse monoclonal antibody raised against a partial recombinant RAB9A.

Catalog # AT3536a

Product Information

Application	WB, IF, E
Primary Accession	P51151
Other Accession	NM_004251
Reactivity	Human
Host	mouse
Clonality	monoclonal
Isotype	IgG2a Kappa
Clone Names	1.0E+12
Calculated MW	22838

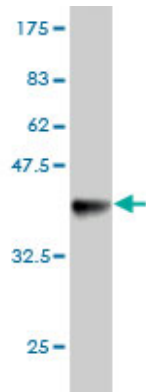
Additional Information

Gene ID	9367
Other Names	Ras-related protein Rab-9A, RAB9A, RAB9
Target/Specificity	RAB9A (NP_004242, 17 a.a. ~ 115 a.a) partial recombinant protein with GST tag. MW of the GST tag alone is 26 KDa.
Dilution	WB~~1:500~1000 IF~~1:50~200 E~~N/A
Format	Clear, colorless solution in phosphate buffered saline, pH 7.2 .
Storage	Store at -20°C or lower. Aliquot to avoid repeated freezing and thawing.
Precautions	RAB9A Antibody (monoclonal) (M01) is for research use only and not for use in diagnostic or therapeutic procedures.

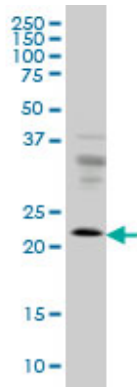
References

Involvement of Rab9 and Rab11 in the intracellular trafficking of TRPC6. Cayouette S, et al. Biochim Biophys Acta, 2010 Jul. PMID 20346379.Assembly of the biogenesis of lysosome-related organelles complex-3 (BLOC-3) and its interaction with Rab9. Kloer DP, et al. J Biol Chem, 2010 Mar 5. PMID 20048159.Human copper transporter 1 lacking O-linked glycosylation is proteolytically cleaved in a Rab9-positive endosomal compartment. Maryon EB, et al. J Biol Chem, 2009 Oct 9. PMID 19684018.RhoBTB3: a Rho GTPase-family ATPase required for endosome to Golgi transport. Espinosa EJ, et al. Cell, 2009 May 29. PMID 19490898.Vaccinia virus p37 interacts with host proteins associated with LE-derived transport vesicle biogenesis. Chen Y, et al. Virol J, 2009 Apr 28. PMID 19400954.

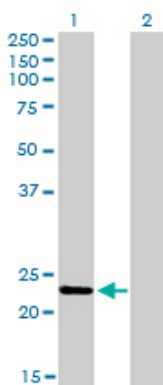
Images



Antibody Reactive Against Recombinant Protein. Western Blot detection against Immunogen (36.63 KDa) .

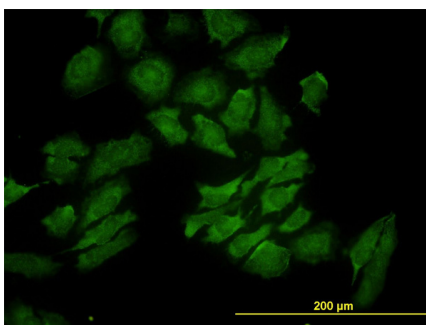


RAB9A monoclonal antibody (M01), clone 1E12 Western Blot analysis of RAB9A expression in HeLa (Cat # AT3536a)

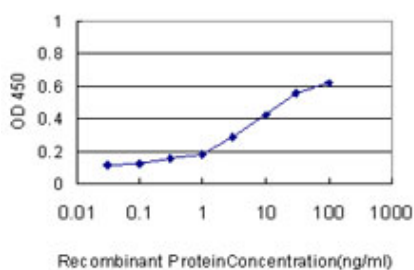


Western Blot analysis of RAB9A expression in transfected 293T cell line by RAB9A monoclonal antibody (M01), clone 1E12.

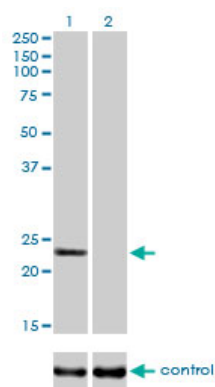
Lane 1: RAB9A transfected lysate(22.8 KDa).
Lane 2: Non-transfected lysate.



Immunofluorescence of monoclonal antibody to RAB9A on HeLa cell. [antibody concentration 10 ug/ml]



Detection limit for recombinant GST tagged RAB9A is approximately 0.1 ng/ml as a capture antibody.



Western blot analysis of RAB9A over-expressed 293 cell line, cotransfected with RAB9A Validated Chimera RNAi (Cat # AT3536a)

Please note: All products are 'FOR RESEARCH USE ONLY. NOT FOR USE IN DIAGNOSTIC OR THERAPEUTIC PROCEDURES'.