

RALB Antibody (monoclonal) (M04)

Mouse monoclonal antibody raised against a partial recombinant RALB.

Catalog # AT3553a

Product Information

Application	WB, IHC, IP, E
Primary Accession	P11234
Other Accession	BC018163
Reactivity	Human
Host	mouse
Clonality	monoclonal
Isotype	IgG2a Kappa
Clone Names	4D1
Calculated MW	23409

Additional Information

Gene ID	5899
Other Names	Ras-related protein Ral-B, RALB
Target/Specificity	RALB (AAH18163, 89 a.a. ~ 183 a.a) partial recombinant protein with GST tag. MW of the GST tag alone is 26 KDa.
Dilution	WB~~1:500~1000 IHC~~1:100~500 IP~~N/A E~~N/A
Format	Clear, colorless solution in phosphate buffered saline, pH 7.2 .
Storage	Store at -20°C or lower. Aliquot to avoid repeated freezing and thawing.
Precautions	RALB Antibody (monoclonal) (M04) is for research use only and not for use in diagnostic or therapeutic procedures.

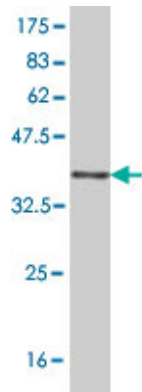
Background

This gene encodes a GTP-binding protein that belongs to the small GTPase superfamily and Ras family of proteins. GTP-binding proteins mediate the transmembrane signaling initiated by the occupancy of certain cell surface receptors.

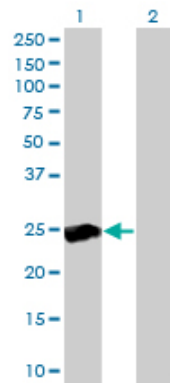
References

1.The mycobacterium bovis BCG phagosome proteome.Lee BY, Jethwaney D, Schilling B, Clemens DL, Gibson BW, Horwitz MA.Mol Cell Proteomics. 2009 Oct 7. [Epub ahead of print]

Images

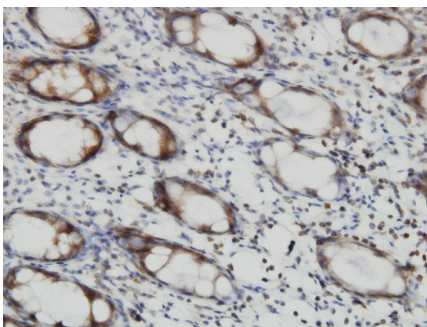


Antibody Reactive Against Recombinant Protein. Western Blot detection against Immunogen (36.08 KDa) .

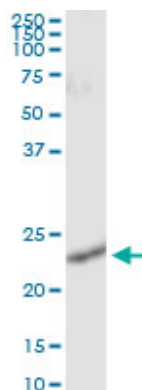


Western Blot analysis of RALB expression in transfected 293T cell line by RALB monoclonal antibody (M04), clone 4D1.

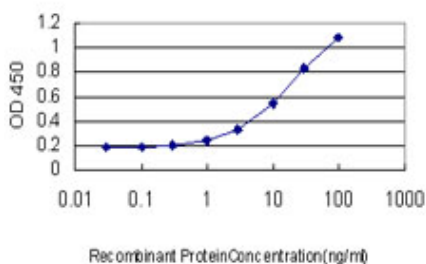
Lane 1: RALB transfected lysate(23.4 KDa).
Lane 2: Non-transfected lysate.



Immunoperoxidase of monoclonal antibody to RALB on formalin-fixed paraffin-embedded human colon. [antibody concentration 3 ug/ml]



Immunoprecipitation of RALB transfected lysate using anti-RALB monoclonal antibody and Protein A Magnetic Bead ([U0007](#)), and immunoblotted with RALB MaxPab rabbit polyclonal antibody.



Detection limit for recombinant GST tagged RALB is approximately 0.3ng/ml as a capture antibody.

Please note: All products are 'FOR RESEARCH USE ONLY. NOT FOR USE IN DIAGNOSTIC OR THERAPEUTIC PROCEDURES'.