

RALGPS2 Antibody (monoclonal) (M01)

Mouse monoclonal antibody raised against a partial recombinant RALGPS2.

Catalog # AT3557a

Product Information

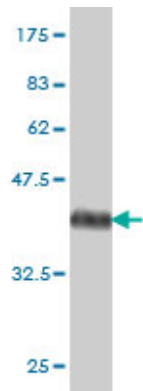
Application	WB, IF, E
Primary Accession	Q86X27
Other Accession	NM_152663
Reactivity	Human
Host	mouse
Clonality	monoclonal
Isotype	IgG2a Kappa
Clone Names	3F1
Calculated MW	65167

Additional Information

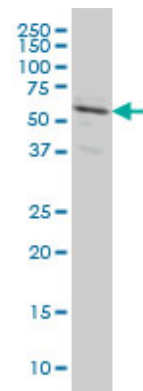
Gene ID	55103
Other Names	Ras-specific guanine nucleotide-releasing factor RalGPS2, Ral GEF with PH domain and SH3-binding motif 2, RalA exchange factor RalGPS2, RALGPS2
Target/Specificity	RALGPS2 (NP_689876, 282 a.a. ~ 386 a.a) partial recombinant protein with GST tag. MW of the GST tag alone is 26 KDa.
Dilution	WB~~1:500~1000 IF~~1:50~200 E~~N/A
Format	Clear, colorless solution in phosphate buffered saline, pH 7.2 .
Storage	Store at -20°C or lower. Aliquot to avoid repeated freezing and thawing.
Precautions	RALGPS2 Antibody (monoclonal) (M01) is for research use only and not for use in diagnostic or therapeutic procedures.

References

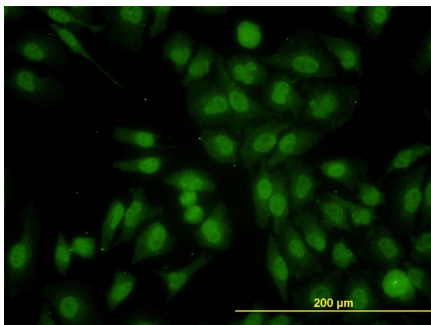
Large-scale mapping of human protein-protein interactions by mass spectrometry. Ewing RM, et al. Mol Syst Biol, 2007. PMID 17353931.Targeted proteomic analysis of 14-3-3 sigma, a p53 effector commonly silenced in cancer. Benzinger A, et al. Mol Cell Proteomics, 2005 Jun. PMID 15778465.Proteomic, functional, and domain-based analysis of in vivo 14-3-3 binding proteins involved in cytoskeletal regulation and cellular organization. Jin J, et al. Curr Biol, 2004 Aug 24. PMID 15324660.Complete sequencing and characterization of 21,243 full-length human cDNAs. Ota T, et al. Nat Genet, 2004 Jan. PMID 14702039.Cloning and characterization of a new Ral-GEF expressed in mouse testis. Martegani E, et al. Ann N Y Acad Sci, 2002 Nov. PMID 12485849.



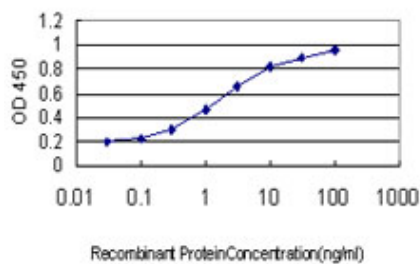
Antibody Reactive Against Recombinant Protein.Western Blot detection against Immunogen (37.29 KDa) .



RALGPS2 monoclonal antibody (M01), clone 3F1 Western Blot analysis of RALGPS2 expression in HeLa (Cat # AT3557a)



Immunofluorescence of monoclonal antibody to RALGPS2 on HeLa cell. [antibody concentration 10 ug/ml]



Detection limit for recombinant GST tagged RALGPS2 is approximately 0.03ng/ml as a capture antibody.

Please note: All products are 'FOR RESEARCH USE ONLY. NOT FOR USE IN DIAGNOSTIC OR THERAPEUTIC PROCEDURES'.