

# RAPGEF4 Antibody (monoclonal) (M01)

Mouse monoclonal antibody raised against a partial recombinant RAPGEF4.

Catalog # AT3567a

## Product Information

---

<b>Application</b>	WB, E
<b>Primary Accession</b>	<a href="#">Q8WZA2</a>
<b>Other Accession</b>	<a href="#">BC024004</a>
<b>Reactivity</b>	Human
<b>Host</b>	mouse
<b>Clonality</b>	monoclonal
<b>Isotype</b>	IgG2b Kappa
<b>Clone Names</b>	1C11
<b>Calculated MW</b>	115522

## Additional Information

---

<b>Gene ID</b>	11069
<b>Other Names</b>	Rap guanine nucleotide exchange factor 4, Exchange factor directly activated by cAMP 2, Exchange protein directly activated by cAMP 2, EPAC 2, cAMP-regulated guanine nucleotide exchange factor II, cAMP-GEFII, RAPGEF4, CGEF2, EPAC2
<b>Target/Specificity</b>	RAPGEF4 (AAH24004, 1 a.a. ~ 110 a.a) partial recombinant protein with GST tag. MW of the GST tag alone is 26 KDa.
<b>Dilution</b>	WB~~1:500~1000 E~~N/A
<b>Format</b>	Clear, colorless solution in phosphate buffered saline, pH 7.2 .
<b>Storage</b>	Store at -20°C or lower. Aliquot to avoid repeated freezing and thawing.
<b>Precautions</b>	RAPGEF4 Antibody (monoclonal) (M01) is for research use only and not for use in diagnostic or therapeutic procedures.

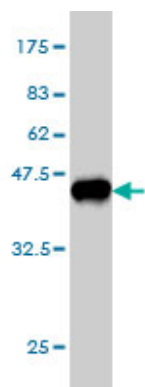
## References

---

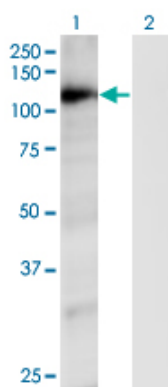
Personalized smoking cessation: interactions between nicotine dose, dependence and quit-success genotype score. Rose JE, et al. Mol Med, 2010 Jul-Aug. PMID 20379614. Functional roles of protein kinase A (PKA) and exchange protein directly activated by 3',5'-cyclic adenosine 5'-monophosphate (cAMP) 2 (EPAC2) in cAMP-mediated actions in adrenocortical cells. Aumo L, et al. Endocrinology, 2010 May. PMID 20233795. Genome-wide pleiotropy of osteoporosis-related phenotypes: the Framingham Study. Karasik D, et al. J Bone Miner Res, 2010 Jul. PMID 20200953. Genes related to sex steroids, neural growth, and social-emotional behavior are associated with autistic traits, empathy, and Asperger syndrome. Chakrabarti

B, et al. Autism Res, 2009 Jun. PMID 19598235. Mechanism of Epac activation: structural and functional analyses of Epac2 hinge mutants with constitutive and reduced activities. Tsalkova T, et al. J Biol Chem, 2009 Aug 28. PMID 19553663.

## Images



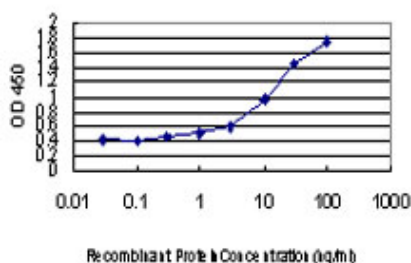
Antibody Reactive Against Recombinant Protein. Western Blot detection against Immunogen (37.73 KDa) .



Western Blot analysis of RAPGEF4 expression in transfected 293T cell line by RAPGEF4 monoclonal antibody (M01), clone 1C11.

Lane 1: RAPGEF4 transfected lysate (Predicted MW: 115.5 KDa).

Lane 2: Non-transfected lysate.



Detection limit for recombinant GST tagged RAPGEF4 is approximately 0.3ng/ml as a capture antibody.

Please note: All products are 'FOR RESEARCH USE ONLY. NOT FOR USE IN DIAGNOSTIC OR THERAPEUTIC PROCEDURES'.