

RASEF Antibody (monoclonal) (M01)

Mouse monoclonal antibody raised against a partial recombinant RASEF.

Catalog # AT3576a

Product Information

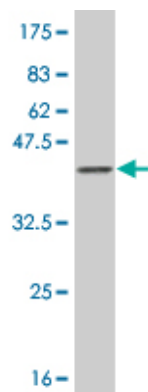
Application	WB, IHC, E
Primary Accession	Q8IZ41
Other Accession	BC023566
Reactivity	Human
Host	mouse
Clonality	monoclonal
Isotype	IgG2b Kappa
Clone Names	2D5
Calculated MW	82879

Additional Information

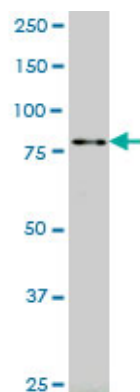
Gene ID	158158
Other Names	Ras and EF-hand domain-containing protein, Ras-related protein Rab-45, RASEF, RAB45
Target/Specificity	RASEF (AAH23566, 631 a.a. ~ 740 a.a) partial recombinant protein with GST tag. MW of the GST tag alone is 26 KDa.
Dilution	WB~~1:500~1000 IHC~~1:100~500 E~~N/A
Format	Clear, colorless solution in phosphate buffered saline, pH 7.2 .
Storage	Store at -20°C or lower. Aliquot to avoid repeated freezing and thawing.
Precautions	RASEF Antibody (monoclonal) (M01) is for research use only and not for use in diagnostic or therapeutic procedures.

References

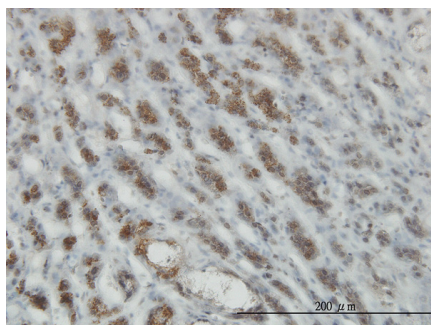
Ulcerative colitis-risk loci on chromosomes 1p36 and 12q15 found by genome-wide association study. Silverberg MS, et al. Nat Genet, 2009 Feb. PMID 19122664. Epigenetic regulation identifies RASEF as a tumor-suppressor gene in uveal melanoma. Maat W, et al. Invest Ophthalmol Vis Sci, 2008 Apr. PMID 18385040. Genome-wide association with select biomarker traits in the Framingham Heart Study. Benjamin EJ, et al. BMC Med Genet, 2007 Sep 19. PMID 17903293. Complete sequencing and characterization of 21,243 full-length human cDNAs. Ota T, et al. Nat Genet, 2004 Jan. PMID 14702039. Generation and initial analysis of more than 15,000 full-length human and mouse cDNA sequences. Strausberg RL, et al. Proc Natl Acad Sci U S A, 2002 Dec 24. PMID 12477932.



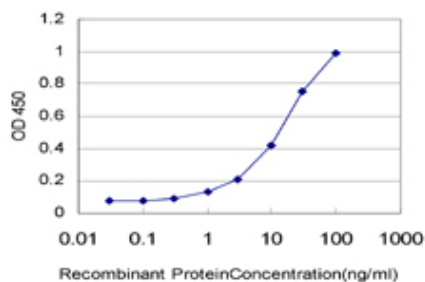
Antibody Reactive Against Recombinant Protein.Western Blot detection against Immunogen (37.73 KDa) .



RASEF monoclonal antibody (M01), clone 2D5 Western Blot analysis of RASEF expression in K-562 ((Cat # AT3576a)



Immunoperoxidase of monoclonal antibody to RASEF on formalin-fixed paraffin-embedded human adrenal gland. [antibody concentration 3 ug/ml]



Detection limit for recombinant GST tagged RASEF is approximately 0.3ng/ml as a capture antibody.

Please note: All products are 'FOR RESEARCH USE ONLY. NOT FOR USE IN DIAGNOSTIC OR THERAPEUTIC PROCEDURES'.