

RASL11B Antibody (monoclonal) (M01)

Mouse monoclonal antibody raised against a full length recombinant RASL11B.

Catalog # AT3582a

Product Information

Application	WB, E
Primary Accession	Q9BPW5
Other Accession	BC025694
Reactivity	Human
Host	mouse
Clonality	monoclonal
Isotype	IgG1 kappa
Clone Names	1B5
Calculated MW	27508

Additional Information

Gene ID	65997
Other Names	Ras-like protein family member 11B, RASL11B {ECO:0000312 EMBL:AAH018461}
Target/Specificity	RASL11B (AAH25694, 1 a.a. ~ 248 a.a) full-length recombinant protein with GST tag. MW of the GST tag alone is 26 KDa.
Dilution	WB~~1:500~1000 E~~N/A
Format	Clear, colorless solution in phosphate buffered saline, pH 7.2 .
Storage	Store at -20°C or lower. Aliquot to avoid repeated freezing and thawing.
Precautions	RASL11B Antibody (monoclonal) (M01) is for research use only and not for use in diagnostic or therapeutic procedures.

Background

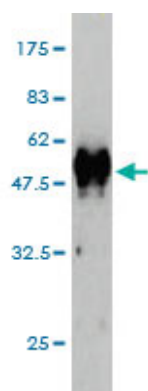
RASL11B is a member of the small GTPase protein family with a high degree of similarity to RAS (see HRAS, MIM 190020) proteins.

References

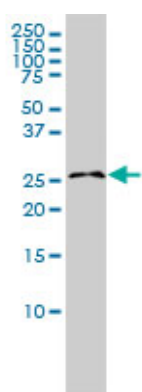
Cloning, genomic organization, and tissue-specific expression of the RASL11B gene. Stolle K, et al. Biochim Biophys Acta, 2007 Jul-Aug. PMID 17628721. Towards a proteome-scale map of the human protein-protein interaction network. Rual JF, et al. Nature, 2005 Oct 20. PMID 16189514. RASL11A, member of a novel small monomeric GTPase gene family, is down-regulated in prostate tumors. Louro R, et al. Biochem Biophys Res

Commun, 2004 Apr 9. PMID 15033445. Complete sequencing and characterization of 21,243 full-length human cDNAs. Ota T, et al. Nat Genet, 2004 Jan. PMID 14702039. Generation and initial analysis of more than 15,000 full-length human and mouse cDNA sequences. Strausberg RL, et al. Proc Natl Acad Sci U S A, 2002 Dec 24. PMID 12477932.

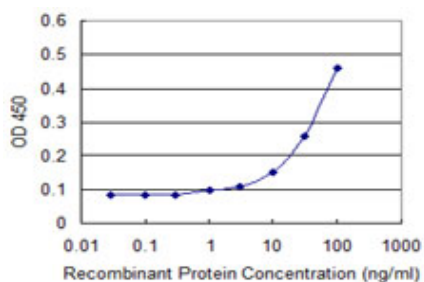
Images



Antibody Reactive Against Recombinant Protein. Western Blot detection against Immunogen (53.02 KDa) .



RASL11B monoclonal antibody (M01), clone 1B5 Western Blot analysis of RASL11B expression in K-562 (Cat # AT3582a)



Detection limit for recombinant GST tagged RASL11B is approximately 3ng/ml as a capture antibody.

Please note: All products are 'FOR RESEARCH USE ONLY. NOT FOR USE IN DIAGNOSTIC OR THERAPEUTIC PROCEDURES'.