

RASSF8 Antibody (monoclonal) (M01)

Mouse monoclonal antibody raised against a partial recombinant RASSF8.

Catalog # AT3583a

Product Information

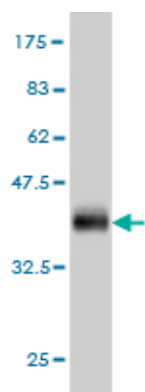
Application	WB, IHC, IF, IP, E
Primary Accession	Q8NHQ8
Other Accession	NM_007211
Reactivity	Human, Mouse
Host	mouse
Clonality	monoclonal
Isotype	IgG2a Kappa
Clone Names	2G1
Calculated MW	48327

Additional Information

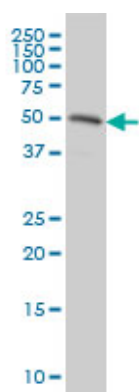
Gene ID	11228
Other Names	Ras association domain-containing protein 8, Carcinoma-associated protein HOJ-1, RASSF8, C12orf2
Target/Specificity	RASSF8 (NP_009142, 40 a.a. ~ 137 a.a) partial recombinant protein with GST tag. MW of the GST tag alone is 26 KDa.
Dilution	WB~~1:500~1000 IHC~~1:100~500 IF~~1:50~200 IP~~N/A E~~N/A
Format	Clear, colorless solution in phosphate buffered saline, pH 7.2 .
Storage	Store at -20°C or lower. Aliquot to avoid repeated freezing and thawing.
Precautions	RASSF8 Antibody (monoclonal) (M01) is for research use only and not for use in diagnostic or therapeutic procedures.

References

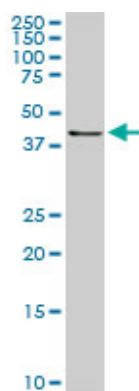
The RASSF8 candidate tumor suppressor inhibits cell growth and regulates the Wnt and NF-kappaB signaling pathways. Lock FE, et al. Oncogene, 2010 Jul 29. PMID 20514026. Personalized smoking cessation: interactions between nicotine dose, dependence and quit-success genotype score. Rose JE, et al. Mol Med, 2010 Jul-Aug. PMID 20379614. Common polymorphisms in D12S1034 flanking genes RASSF8 and BHLHB3 are not associated with lung adenocarcinoma risk. Falvella FS, et al. Lung Cancer, 2007 Apr. PMID 17194498. Identification of RASSF8 as a candidate lung tumor suppressor gene. Falvella FS, et al. Oncogene, 2006 Jun 29. PMID 16462760. Diversification of transcriptional modulation: large-scale identification and characterization of putative alternative promoters of human genes. Kimura K, et al. Genome Res, 2006 Jan. PMID 16344560.



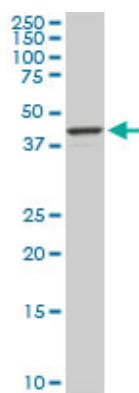
Antibody Reactive Against Recombinant Protein. Western Blot detection against Immunogen (36.52 KDa) .



RASSF8 monoclonal antibody (M01), clone 2G1 Western Blot analysis of RASSF8 expression in HeLa ((Cat # AT3583a)

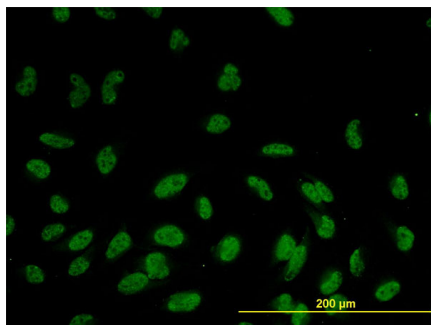
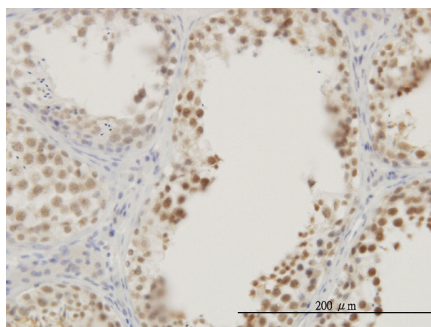


RASSF8 monoclonal antibody (M01), clone 2G1. Western Blot analysis of RASSF8 expression in PC-12((Cat # AT3583a)

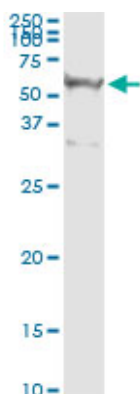


RASSF8 monoclonal antibody (M01), clone 2G1. Western Blot analysis of RASSF8 expression in NIH/3T3((Cat # AT3583a)

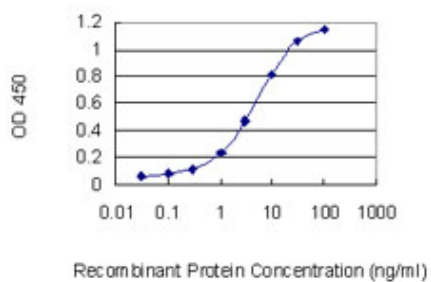
Immunoperoxidase of monoclonal antibody to RASSF8 on formalin-fixed paraffin-embedded human testis. [antibody concentration 3 ug/ml]



Immunofluorescence of monoclonal antibody to RASSF8 on HeLa cell. [antibody concentration 10 ug/ml]



Immunoprecipitation of RASSF8 transfected lysate using anti-RASSF8 monoclonal antibody and Protein A Magnetic Bead ([U0007](#)), and immunoblotted with RASSF8 MaxPab rabbit polyclonal antibody.



Detection limit for recombinant GST tagged RASSF8 is 0.1 ng/ml as a capture antibody.

Please note: All products are 'FOR RESEARCH USE ONLY. NOT FOR USE IN DIAGNOSTIC OR THERAPEUTIC PROCEDURES'.