

RBM5 Antibody (monoclonal) (M01)

Mouse monoclonal antibody raised against a partial recombinant RBM5.

Catalog # AT3592a

Product Information

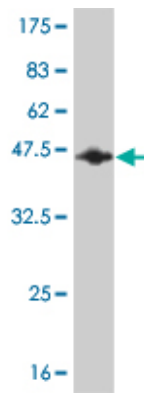
Application	WB, IHC, IF
Primary Accession	P52756
Other Accession	BC002957
Reactivity	Human
Host	mouse
Clonality	monoclonal
Isotype	IgG2a Kappa
Clone Names	2B6
Calculated MW	92154

Additional Information

Gene ID	10181
Other Names	RNA-binding protein 5, Protein G15, Putative tumor suppressor LUCA15, RNA-binding motif protein 5, Renal carcinoma antigen NY-REN-9, RBM5
Target/Specificity	RBM5 (AAH02957, 75 a.a. ~ 184 a.a) partial recombinant protein with GST tag. MW of the GST tag alone is 26 KDa.
Dilution	WB~~1:500~1000 IHC~~1:100~500 IF~~1:50~200
Format	Clear, colorless solution in phosphate buffered saline, pH 7.2 .
Storage	Store at -20°C or lower. Aliquot to avoid repeated freezing and thawing.
Precautions	RBM5 Antibody (monoclonal) (M01) is for research use only and not for use in diagnostic or therapeutic procedures.

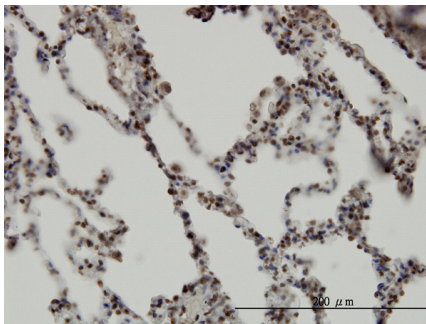
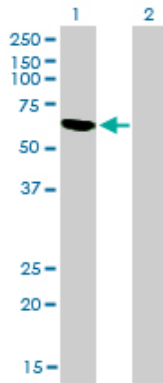
Images

Antibody Reactive Against Recombinant Protein.Western Blot detection against Immunogen (37.73 KDa) .

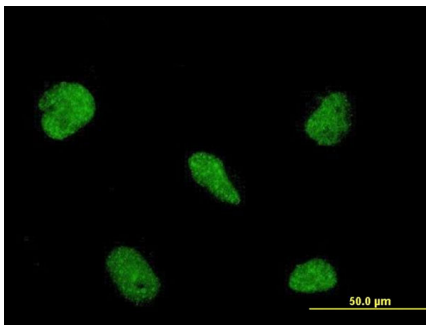


Western Blot analysis of RBM5 expression in transfected 293T cell line by RBM5 monoclonal antibody (M01), clone 2B6.

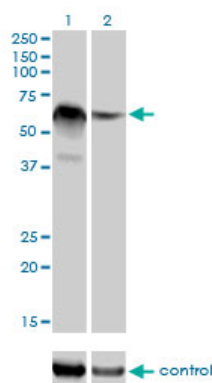
Lane 1: RBM5 transfected lysate(61.5 KDa).
Lane 2: Non-transfected lysate.



Immunoperoxidase of monoclonal antibody to RBM5 on formalin-fixed paraffin-embedded human lung. [antibody concentration 3 ug/ml]



Immunofluorescence of monoclonal antibody to RBM5 on HeLa cell . [antibody concentration 10 ug/ml]



Western blot analysis of RBM5 over-expressed 293 cell line, cotransfected with RBM5 Validated Chimera RNAi (Cat # AT3592a)

Please note: All products are 'FOR RESEARCH USE ONLY. NOT FOR USE IN DIAGNOSTIC OR THERAPEUTIC PROCEDURES'.