

RBPSUH Antibody (monoclonal) (M01)

Mouse monoclonal antibody raised against a partial recombinant RBPJ.

Catalog # AT3603a

Product Information

Application	WB
Primary Accession	Q06330
Other Accession	NM_203284
Reactivity	Human
Host	mouse
Clonality	monoclonal
Isotype	IgG2b Kappa
Clone Names	4.0E+12
Calculated MW	55637

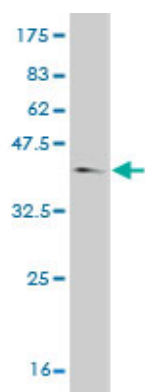
Additional Information

Gene ID	3516
Other Names	Recombining binding protein suppressor of hairless, CBF-1, J kappa-recombination signal-binding protein, RBP-J kappa, RBP-J, RBP-JK, Renal carcinoma antigen NY-REN-30, RBPJ, IGKJRB, IGKJRB1, RBPJK, RBPSUH
Target/Specificity	RBPJ (NP_976029, 3 a.a. ~ 109 a.a) partial recombinant protein with GST tag. MW of the GST tag alone is 26 KDa.
Dilution	WB~~1:500~1000
Format	Clear, colorless solution in phosphate buffered saline, pH 7.2 .
Storage	Store at -20°C or lower. Aliquot to avoid repeated freezing and thawing.
Precautions	RBPSUH Antibody (monoclonal) (M01) is for research use only and not for use in diagnostic or therapeutic procedures.

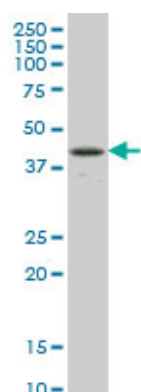
References

Notch target gene deregulation and maintenance of the leukemogenic phenotype do not require RBP-J kappa in Ikaros null mice. Chari S, et al. J Immunol, 2010 Jul 1. PMID 20511547.Genome-wide association study meta-analysis identifies seven new rheumatoid arthritis risk loci. Stahl EA, et al. Nat Genet, 2010 Jun. PMID 20453842.Personalized smoking cessation: interactions between nicotine dose, dependence and quit-success genotype score. Rose JE, et al. Mol Med, 2010 Jul-Aug. PMID 20379614.Genetic risk factors for hepatopulmonary syndrome in patients with advanced liver disease. Roberts KE, et al. Gastroenterology, 2010 Jul. PMID 20346360.Thermodynamic analysis of the CSL x Notch interaction: distribution of binding energy of the Notch RAM region to the CSL beta-trefoil domain and the mode of competition with the viral

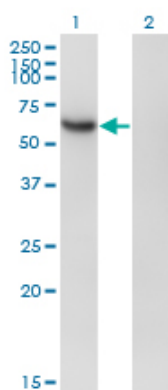
Images



Antibody Reactive Against Recombinant Protein. Western Blot detection against Immunogen (37.51 KDa) .



RBPJ monoclonal antibody (M01), clone 4E12 Western Blot analysis of RBPJ expression in Jurkat ((Cat # AT3603a)



Western Blot analysis of RBPJ expression in transfected 293T cell line by RBPJ monoclonal antibody (M01), clone 4E12.

Lane 1: RBPJ transfected lysate(54.3 KDa).
Lane 2: Non-transfected lysate.

Please note: All products are 'FOR RESEARCH USE ONLY. NOT FOR USE IN DIAGNOSTIC OR THERAPEUTIC PROCEDURES'.