

RCC1 Antibody (monoclonal) (M01)

Mouse monoclonal antibody raised against a partial recombinant RCC1.

Catalog # AT3604a

Product Information

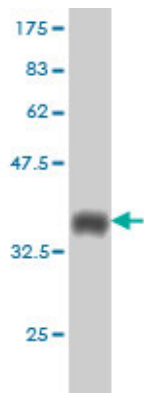
Application	WB, IHC, IF
Primary Accession	P18754
Other Accession	BC007300
Reactivity	Human
Host	mouse
Clonality	monoclonal
Isotype	IgG1 Kappa
Clone Names	2F1
Calculated MW	44969

Additional Information

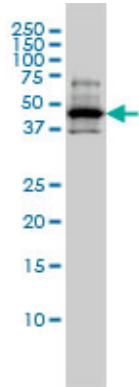
Gene ID	1104
Other Names	Regulator of chromosome condensation, Cell cycle regulatory protein, Chromosome condensation protein 1, RCC1, CHC1
Target/Specificity	RCC1 (AAH07300, 312 a.a. ~ 421 a.a) partial recombinant protein with GST tag. MW of the GST tag alone is 26 KDa.
Dilution	WB~~1:500~1000 IHC~~1:100~500 IF~~1:50~200
Format	Clear, colorless solution in phosphate buffered saline, pH 7.2 .
Storage	Store at -20°C or lower. Aliquot to avoid repeated freezing and thawing.
Precautions	RCC1 Antibody (monoclonal) (M01) is for research use only and not for use in diagnostic or therapeutic procedures.

Images

Antibody Reactive Against Recombinant Protein.Western Blot detection against Immunogen (37.73 KDa) .

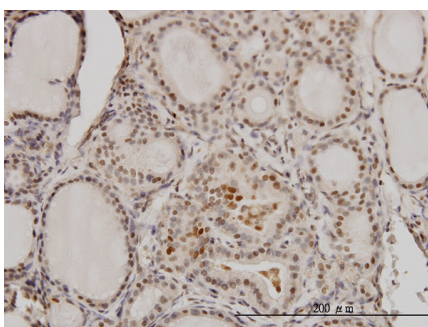
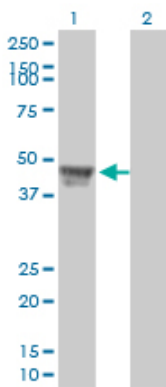


RCC1 monoclonal antibody (M01), clone 2F1 Western Blot analysis of RCC1 expression in A-431 (Cat # AT3604a)

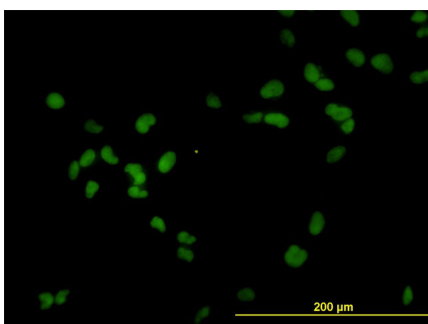


Western Blot analysis of RCC1 expression in transfected 293T cell line by RCC1 monoclonal antibody (M01), clone 2F1.

Lane 1: RCC1 transfected lysate(45 KDa).
Lane 2: Non-transfected lysate.



Immunoperoxidase of monoclonal antibody to RCC1 on formalin-fixed paraffin-embedded human thyroid nodular goiter. [antibody concentration 3 ug/ml]



Immunofluorescence of monoclonal antibody to RCC1 on HeLa cell. [antibody concentration 10 ug/ml]

Please note: All products are 'FOR RESEARCH USE ONLY. NOT FOR USE IN DIAGNOSTIC OR THERAPEUTIC PROCEDURES'.