

RDHE2 Antibody (monoclonal) (M01)

Mouse monoclonal antibody raised against a full length recombinant RDHE2.

Catalog # AT3610a

Product Information

Application	WB
Primary Accession	Q8N3Y7
Other Accession	BC037219
Reactivity	Human, Mouse, Rat
Host	mouse
Clonality	monoclonal
Isotype	IgG2b Kappa
Clone Names	3G8
Calculated MW	34095

Additional Information

Gene ID	195814
Other Names	Epidermal retinol dehydrogenase 2, EPHD-2, RDH-E2, Retinal short-chain dehydrogenase reductase 2, retSDR2, Short-chain dehydrogenase/reductase family 16C member 5, SDR16C5, RDHE2
Target/Specificity	RDHE2 (AAH37219, 26 a.a. ~ 309 a.a) full-length recombinant protein with GST tag. MW of the GST tag alone is 26 KDa.
Dilution	WB~~1:500~1000
Format	Clear, colorless solution in phosphate buffered saline, pH 7.2 .
Storage	Store at -20°C or lower. Aliquot to avoid repeated freezing and thawing.
Precautions	RDHE2 Antibody (monoclonal) (M01) is for research use only and not for use in diagnostic or therapeutic procedures.

Background

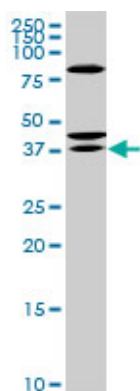
RDHE2 belongs to a family of short-chain alcohol dehydrogenases/reductases that catalyze the first and rate-limiting step that generates retinaldehyde from retinol (Matsuzaka et al., 2002 [PubMed 12372410]).

References

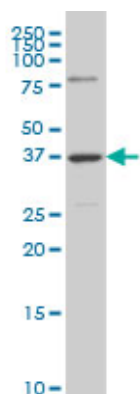
The role of height-associated loci identified in genome wide association studies in the determination of pediatric stature. Zhao J, et al. BMC Med Genet, 2010 Jun 14. PMID 20546612. Personalized smoking cessation: interactions between nicotine dose, dependence and quit-success genotype score. Rose JE, et al.

Mol Med, 2010 Jul-Aug. PMID 20379614. Meta-analysis of genome-wide scans for human adult stature identifies novel Loci and associations with measures of skeletal frame size. Soranzo N, et al. PLoS Genet, 2009 Apr. PMID 19343178. Characterization of key residues and membrane association domains in retinol dehydrogenase 10. Takahashi Y, et al. Biochem J, 2009 Apr 1. PMID 19102727. Biochemical characterization of human epidermal retinol dehydrogenase 2. Lee SA, et al. Chem Biol Interact, 2009 Mar 16. PMID 18926804.

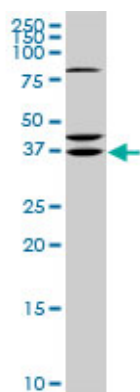
Images



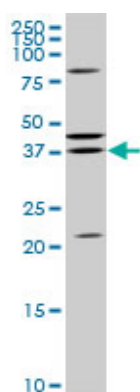
RDHE2 monoclonal antibody (M01), clone 3G8. Western Blot analysis of RDHE2 expression in PC-12 (Cat # L012V1).



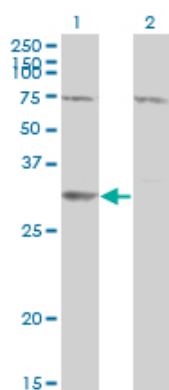
RDHE2 monoclonal antibody (M01), clone 3G8 Western Blot analysis of RDHE2 expression in Hela S3 NE (Cat # AT3610a)



RDHE2 monoclonal antibody (M01), clone 3G8. Western Blot analysis of RDHE2 expression in Raw 264.7 (Cat # AT3610a)



RDHE2 monoclonal antibody (M01), clone 3G8. Western Blot analysis of RDHE2 expression in NIH/3T3 (Cat # AT3610a)



Western Blot analysis of SDR16C5 expression in transfected 293T cell line by RDHE2 monoclonal antibody (M01), clone 3G8.

Lane 1: SDR16C5 transfected lysate(34.1 KDa).
Lane 2: Non-transfected lysate.

Please note: All products are 'FOR RESEARCH USE ONLY. NOT FOR USE IN DIAGNOSTIC OR THERAPEUTIC PROCEDURES'.