

REC14 Antibody (monoclonal) (M01)

Mouse monoclonal antibody raised against a full length recombinant REC14.

Catalog # AT3613a

Product Information

Application	WB, IF
Primary Accession	Q9GZS3
Other Accession	BC010080
Reactivity	Human
Host	mouse
Clonality	monoclonal
Isotype	IgG2b kappa
Clone Names	3E5-1A12
Calculated MW	33581

Additional Information

Gene ID	80349
Other Names	WD repeat-containing protein 61, Meiotic recombination REC14 protein homolog, SKI8 homolog, Ski8, WD repeat-containing protein 61, N-terminally processed, WDR61
Target/Specificity	REC14 (AAH10080, 1 a.a. ~ 305 a.a) full-length recombinant protein with GST tag. MW of the GST tag alone is 26 KDa.
Dilution	WB~~1:500~1000 IF~~1:50~200
Format	Clear, colorless solution in phosphate buffered saline, pH 7.2 .
Storage	Store at -20°C or lower. Aliquot to avoid repeated freezing and thawing.
Precautions	REC14 Antibody (monoclonal) (M01) is for research use only and not for use in diagnostic or therapeutic procedures.

Background

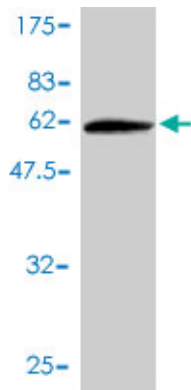
WDR61 is a subunit of the human PAF and SKI complexes, which function in transcriptional regulation and are involved in events downstream of RNA synthesis, such as RNA surveillance (Zhu et al., 2005 [PubMed 16024656]).

References

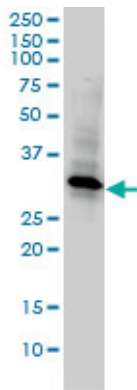
Characterization of the interactome of the human MutL homologues MLH1, PMS1, and PMS2. Cannavo E, et al. J Biol Chem, 2007 Feb 2. PMID 17148452. A human protein-protein interaction network: a resource for

annotating the proteome. Stelzl U, et al. Cell, 2005 Sep 23. PMID 16169070. The human PAF complex coordinates transcription with events downstream of RNA synthesis. Zhu B, et al. Genes Dev, 2005 Jul 15. PMID 16024656. High-throughput mapping of a dynamic signaling network in mammalian cells. Barrios-Rodiles M, et al. Science, 2005 Mar 11. PMID 15761153. The status, quality, and expansion of the NIH full-length cDNA project: the Mammalian Gene Collection (MGC). Gerhard DS, et al. Genome Res, 2004 Oct. PMID 15489334.

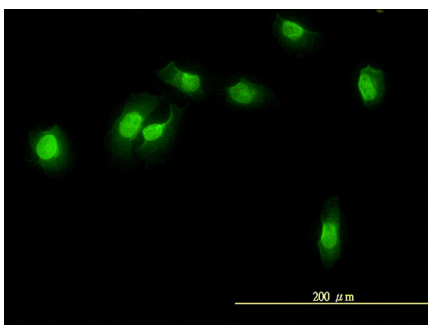
Images



Antibody Reactive Against Recombinant Protein. Western Blot detection against Immunogen (59.29 KDa) .



REC14 monoclonal antibody (M01), clone 3E5-1A12
Western Blot analysis of REC14 expression in HeLa (Cat # AT3613a)



Immunofluorescence of monoclonal antibody to WDR61 on HeLa cell. [antibody concentration 10 ug/ml]

Please note: All products are 'FOR RESEARCH USE ONLY. NOT FOR USE IN DIAGNOSTIC OR THERAPEUTIC PROCEDURES'.