

RHCG Antibody (monoclonal) (M06)

Mouse monoclonal antibody raised against a partial recombinant RHCG.

Catalog # AT3632a

Product Information

Application	WB, IHC
Primary Accession	Q9UBD6
Other Accession	NM_016321
Reactivity	Human, Rat
Host	mouse
Clonality	monoclonal
Isotype	IgG2a Kappa
Clone Names	5A4
Calculated MW	53179

Additional Information

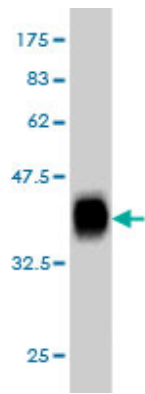
Gene ID	51458
Other Names	Ammonium transporter Rh type C, Rh glycoprotein kidney, Rhesus blood group family type C glycoprotein, Rh family type C glycoprotein, Rh type C glycoprotein, Tumor-related protein DRC2, RHCG, C15orf6, CDRC2, PDRC2, RHGK
Target/Specificity	RHCG (NP_057405, 418 a.a. ~ 479 a.a) partial recombinant protein with GST tag. MW of the GST tag alone is 26 KDa.
Dilution	WB~~1:500~1000 IHC~~1:100~500
Format	Clear, colorless solution in phosphate buffered saline, pH 7.2 .
Storage	Store at -20°C or lower. Aliquot to avoid repeated freezing and thawing.
Precautions	RHCG Antibody (monoclonal) (M06) is for research use only and not for use in diagnostic or therapeutic procedures.

References

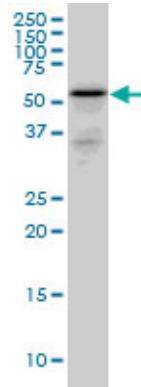
1.Remodeling of the Fetal Collecting Duct Epithelium.Hiatt MJ, Ivanova L, Toran N, Tarantal AF, Matsell DG.Am J Pathol. 2010 Feb;176(2):630-7. Epub 2009 Dec 24.

Images

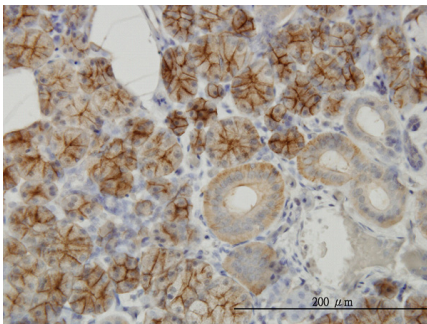
Antibody Reactive Against Recombinant Protein.Western



Blot detection against Immunogen (32.56 KDa) .



RHCG monoclonal antibody (M06), clone 5A4 Western Blot analysis of RHCG expression in PC-12 ((Cat # AT3632a)



Immunoperoxidase of monoclonal antibody to RHCG on formalin-fixed paraffin-embedded human salivary gland. [antibody concentration 3 ug/ml]

Please note: All products are 'FOR RESEARCH USE ONLY. NOT FOR USE IN DIAGNOSTIC OR THERAPEUTIC PROCEDURES'.