

RHOC Antibody (monoclonal) (M06)

Mouse monoclonal antibody raised against a full-length recombinant RHOC.

Catalog # AT3637a

Product Information

Application	WB, IF, E
Primary Accession	P08134
Other Accession	BC007245
Reactivity	Human, Mouse, Rat
Host	mouse
Clonality	monoclonal
Isotype	IgG2a Kappa
Clone Names	1B7
Calculated MW	22006

Additional Information

Gene ID	389
Other Names	Rho-related GTP-binding protein RhoC, Rho cDNA clone 9, h9, RHOC, ARH9, ARHC
Target/Specificity	RHOC (AAH07245, 1 a.a. ~ 193 a.a) full-length recombinant protein with GST tag. MW of the GST tag alone is 26 KDa.
Dilution	WB~~1:500~1000 IF~~1:50~200 E~~N/A
Format	Clear, colorless solution in phosphate buffered saline, pH 7.2 .
Storage	Store at -20°C or lower. Aliquot to avoid repeated freezing and thawing.
Precautions	RHOC Antibody (monoclonal) (M06) is for research use only and not for use in diagnostic or therapeutic procedures.

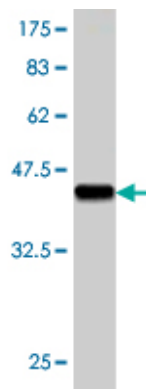
Background

This gene encodes a member of the Rho family of small GTPases, which cycle between inactive GDP-bound and active GTP-bound states and function as molecular switches in signal transduction cascades. Rho proteins promote reorganization of the actin cytoskeleton and regulate cell shape, attachment, and motility. The protein encoded by this gene is prenylated at its C-terminus, and localizes to the cytoplasm and plasma membrane. It is thought to be important in cell locomotion. Overexpression of this gene is associated with tumor cell proliferation and metastasis. Multiple alternatively spliced variants, encoding the same protein, have been identified.

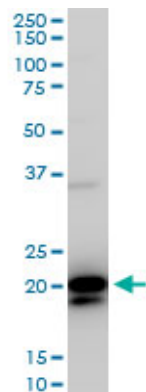
References

1. Rhos and Rho kinases in the rat prostate: their possible functional roles and distributions. Saito M, Ohmasa F, Shomori K, Dimitriadis F, Ohiwa H, Shimizu S, Tsounapi P, Kinoshita Y, Satoh K. Mol Cell Biochem. 2011 Jul 1. [Epub ahead of print]

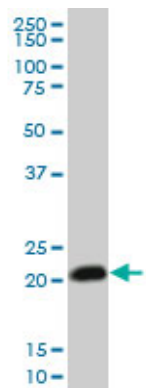
Images



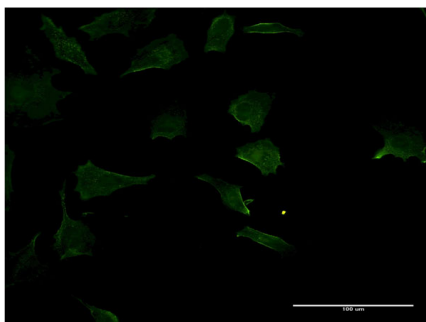
Antibody Reactive Against Recombinant Protein. Western Blot detection against Immunogen (46.97 KDa) .



RHOC monoclonal antibody (M06), clone 1B7. Western Blot analysis of RHOC expression in PC-12 (Cat # AT3637a)

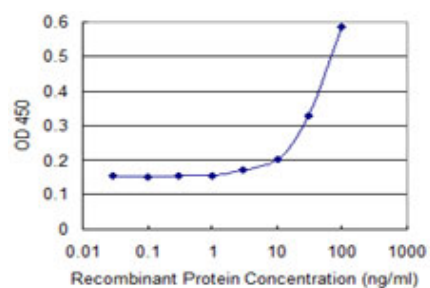


RHOC monoclonal antibody (M06), clone 1B7. Western Blot analysis of RHOC expression in NIH/3T3 (Cat # AT3637a)



Immunofluorescence of monoclonal antibody to RHOC on HeLa cell . [antibody concentration 10 ug/ml]

Detection limit for recombinant GST tagged RHOC is 3 ng/ml as a capture antibody.



Please note: All products are 'FOR RESEARCH USE ONLY. NOT FOR USE IN DIAGNOSTIC OR THERAPEUTIC PROCEDURES'.