

# RHOT1 Antibody (monoclonal) (M01)

Mouse monoclonal antibody raised against a partial recombinant RHOT1.

Catalog # AT3640a

## Product Information

---

<b>Application</b>	WB, E
<b>Primary Accession</b>	<a href="#">Q8IXI2</a>
<b>Other Accession</b>	<a href="#">NM_018307</a>
<b>Reactivity</b>	Human
<b>Host</b>	mouse
<b>Clonality</b>	monoclonal
<b>Isotype</b>	IgG1 Kappa
<b>Clone Names</b>	4H4
<b>Calculated MW</b>	70784

## Additional Information

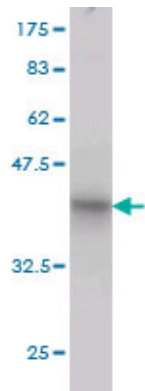
---

<b>Gene ID</b>	55288
<b>Other Names</b>	Mitochondrial Rho GTPase 1, MIRO-1, hMiro-1, 365-, Rac-GTP-binding protein-like protein, Ras homolog gene family member T1, RHOT1, ARHT1
<b>Target/Specificity</b>	RHOT1 (NP_060777, 483 a.a. ~ 580 a.a) partial recombinant protein with GST tag. MW of the GST tag alone is 26 KDa.
<b>Dilution</b>	WB~~1:500~1000 E~~N/A
<b>Format</b>	Clear, colorless solution in phosphate buffered saline, pH 7.2 .
<b>Storage</b>	Store at -20°C or lower. Aliquot to avoid repeated freezing and thawing.
<b>Precautions</b>	RHOT1 Antibody (monoclonal) (M01) is for research use only and not for use in diagnostic or therapeutic procedures.

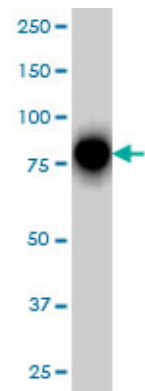
## References

---

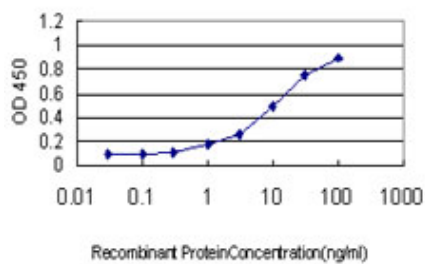
1.GTPase of the immune-associated nucleotide-binding protein 5 (GIMAP5) regulates calcium influx in T lymphocytes by promoting mitochondrial calcium accumulation.Chen XL, Serrano D, Mayhue M, Wieden HJ, Stankova J, Boulay G, Ilangumaran S, Ramanathan S.Biochem J. 2012 Oct 26. [Epub ahead of print]2.N-acetylglucosamine transferase is an integral component of a kinesin-directed mitochondrial trafficking complex.Pozo KB, Stephenson FA.Biochim Biophys Acta. 2010 Oct 27. [Epub ahead of print]3.GTPase dependent recruitment of Grif-1 by Miro1 regulates mitochondrial trafficking in hippocampal neurons.Macaskill AF, Brickley K, Stephenson FA, Kittler JT.Mol Cell Neurosci. 2009 Mar;40(3):301-12. Epub 2008 Dec 3.



Antibody Reactive Against Recombinant Protein.Western Blot detection against Immunogen (36.52 KDa) .



RHOT1 monoclonal antibody (M01), clone 4H4 Western Blot analysis of RHOT1 expression in HeLa S3 NE ( (Cat # AT3640a )



Detection limit for recombinant GST tagged RHOT1 is approximately 0.3ng/ml as a capture antibody.

Please note: All products are 'FOR RESEARCH USE ONLY. NOT FOR USE IN DIAGNOSTIC OR THERAPEUTIC PROCEDURES'.