

RIOK3 Antibody (monoclonal) (M01)

Mouse monoclonal antibody raised against a full length recombinant RIOK3.

Catalog # AT3644a

Product Information

Application	WB, IP, E
Primary Accession	O14730
Other Accession	BC039729
Reactivity	Human
Host	mouse
Clonality	monoclonal
Isotype	IgG1 kappa
Clone Names	4A12-1D2
Calculated MW	59093

Additional Information

Gene ID	8780
Other Names	Serine/threonine-protein kinase RIO3, RIO kinase 3, sudd homolog, RIOK3, SUDD
Target/Specificity	RIOK3 (AAH39729, 1 a.a. ~ 516 a.a) full-length recombinant protein with GST tag. MW of the GST tag alone is 26 KDa.
Dilution	WB~~1:500~1000 IP~~N/A E~~N/A
Format	Clear, colorless solution in phosphate buffered saline, pH 7.2 .
Storage	Store at -20°C or lower. Aliquot to avoid repeated freezing and thawing.
Precautions	RIOK3 Antibody (monoclonal) (M01) is for research use only and not for use in diagnostic or therapeutic procedures.

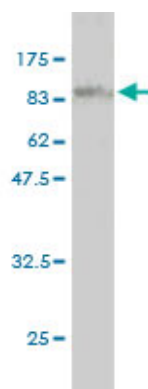
Background

This gene was identified by the similarity of its product to the *Aspergillus nidulans* SUDD protein, an extragenic suppressor of the heat-sensitive bimD6 mutation that fails to attach properly to the spindle microtubules at a restrictive temperature. The specific function of this gene has not yet been determined.

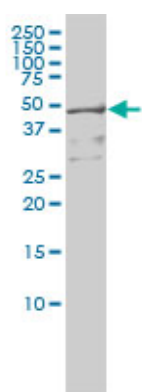
References

1.Genomic alterations link Rho family of GTPases to the highly invasive phenotype of pancreas cancer.Kimmelman AC, Hezel AF, Aguirre AJ, Zheng H, Paik JH, Ying H, Chu GC, Zhang JX, Sahin E, Yeo G, Ponugoti A, Nabioullin R, Deroo S, Yang S, Wang X, McGrath JP, Protopopova M, Ivanova E, Zhang J, Feng B,

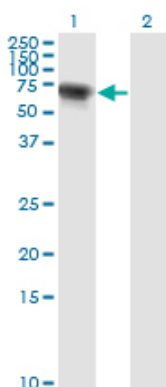
Images



Antibody Reactive Against Recombinant Protein. Western Blot detection against Immunogen (82.5 KDa) .

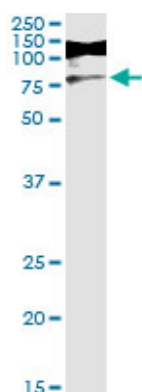


R1OK3 monoclonal antibody (M01), clone 4A12-1D2
Western Blot analysis of R1OK3 expression in HeLa S3 NE (Cat # AT3644a)



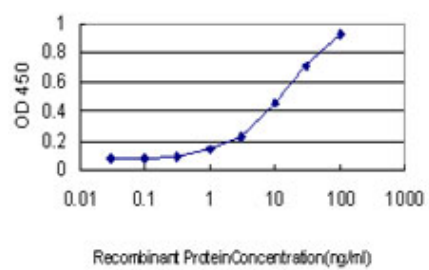
Western Blot analysis of R1OK3 expression in transfected 293T cell line by R1OK3 monoclonal antibody (M01), clone 4A12-1D2.

Lane 1: R1OK3 transfected lysate(59.1 KDa).
Lane 2: Non-transfected lysate.



Immunoprecipitation of R1OK3 transfected lysate using anti-R1OK3 monoclonal antibody and Protein A Magnetic Bead ([U0007](#)), and immunoblotted with R1OK3 MaxPab rabbit polyclonal antibody.

Detection limit for recombinant GST tagged R1OK3 is approximately 0.3ng/ml as a capture antibody.



Please note: All products are 'FOR RESEARCH USE ONLY. NOT FOR USE IN DIAGNOSTIC OR THERAPEUTIC PROCEDURES'.