

RIOK3 Antibody (monoclonal) (M02)

Mouse monoclonal antibody raised against a partial recombinant RIOK3.

Catalog # AT3645a

Product Information

Application	WB, E
Primary Accession	O14730
Other Accession	BC039729
Reactivity	Human
Host	mouse
Clonality	monoclonal
Isotype	IgG1 Kappa
Clone Names	3G11
Calculated MW	59093

Additional Information

Gene ID	8780
Other Names	Serine/threonine-protein kinase RIO3, RIO kinase 3, sudd homolog, RIOK3, SUDD
Target/Specificity	RIOK3 (AAH39729, 411 a.a. ~ 516 a.a) partial recombinant protein with GST tag. MW of the GST tag alone is 26 KDa.
Dilution	WB~~1:500~1000 E~~N/A
Format	Clear, colorless solution in phosphate buffered saline, pH 7.2 .
Storage	Store at -20°C or lower. Aliquot to avoid repeated freezing and thawing.
Precautions	RIOK3 Antibody (monoclonal) (M02) is for research use only and not for use in diagnostic or therapeutic procedures.

Background

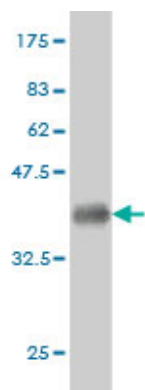
This gene was identified by the similarity of its product to the *Aspergillus nidulans* SUDD protein, an extragenic suppressor of the heat-sensitive bimD6 mutation that fails to attach properly to the spindle microtubules at a restrictive temperature. The specific function of this gene has not yet been determined.

References

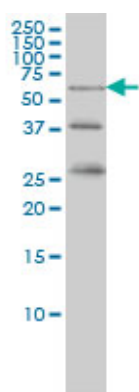
Genomic alterations link Rho family of GTPases to the highly invasive phenotype of pancreas cancer. Kimmelman AC, et al. Proc Natl Acad Sci U S A, 2008 Dec 9. PMID 19050074. Toward a confocal subcellular atlas of the human proteome. Barbe L, et al. Mol Cell Proteomics, 2008 Mar. PMID 18029348. Large-scale

mapping of human protein-protein interactions by mass spectrometry. Ewing RM, et al. Mol Syst Biol, 2007. PMID 17353931. Diversification of transcriptional modulation: large-scale identification and characterization of putative alternative promoters of human genes. Kimura K, et al. Genome Res, 2006 Jan. PMID 16344560. DNA sequence and analysis of human chromosome 18. Nusbaum C, et al. Nature, 2005 Sep 22. PMID 16177791.

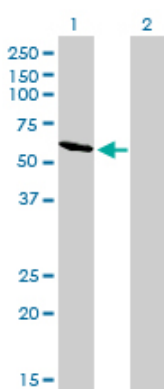
Images



Antibody Reactive Against Recombinant Protein. Western Blot detection against Immunogen (37.29 KDa) .

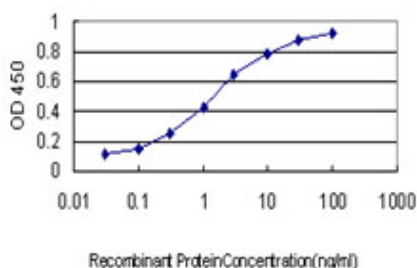


R1OK3 monoclonal antibody (M02), clone 3G11 Western Blot analysis of R1OK3 expression in K-562 ((Cat # AT3645a)



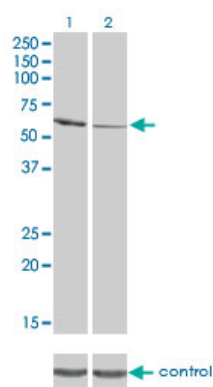
Western Blot analysis of R1OK3 expression in transfected 293T cell line by R1OK3 monoclonal antibody (M02), clone 3G11.

Lane 1: R1OK3 transfected lysate(59.1 KDa).
Lane 2: Non-transfected lysate.



Detection limit for recombinant GST tagged R1OK3 is approximately 0.03ng/ml as a capture antibody.

Western blot analysis of R1OK3 over-expressed 293 cell line, cotransfected with R1OK3 Validated Chimera RNAi (



(Cat # AT3645a)

Please note: All products are 'FOR RESEARCH USE ONLY. NOT FOR USE IN DIAGNOSTIC OR THERAPEUTIC PROCEDURES'.