

RIT2 Antibody (monoclonal) (M01)

Mouse monoclonal antibody raised against a full length recombinant RIT2.

Catalog # AT3648a

Product Information

Application	WB, E
Primary Accession	Q99578
Other Accession	BC018060
Reactivity	Human
Host	mouse
Clonality	monoclonal
Isotype	IgG1 kappa
Clone Names	3F2
Calculated MW	24668

Additional Information

Gene ID	6014
Other Names	GTP-binding protein Rit2, Ras-like protein expressed in neurons, Ras-like without CAAX protein 2, RIT2, RIN, ROC2
Target/Specificity	RIT2 (AAH18060, 1 a.a. ~ 217 a.a) full-length recombinant protein with GST tag. MW of the GST tag alone is 26 KDa.
Dilution	WB~~1:500~1000 E~~N/A
Format	Clear, colorless solution in phosphate buffered saline, pH 7.2 .
Storage	Store at -20°C or lower. Aliquot to avoid repeated freezing and thawing.
Precautions	RIT2 Antibody (monoclonal) (M01) is for research use only and not for use in diagnostic or therapeutic procedures.

Background

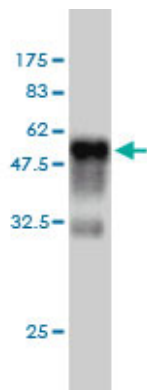
RIN belongs to the RAS (HRAS; MIM 190020) superfamily of small GTPases (Shao et al., 1999 [PubMed 10545207]).

References

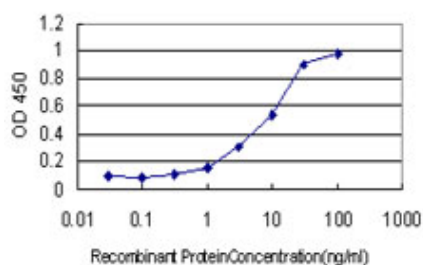
Strong synaptic transmission impact by copy number variations in schizophrenia. Glessner JT, et al. Proc Natl Acad Sci U S A, 2010 Jun 8. PMID 20489179. Personalized smoking cessation: interactions between nicotine dose, dependence and quit-success genotype score. Rose JE, et al. Mol Med, 2010 Jul-Aug. PMID 20379614. A genome-wide study of common SNPs and CNVs in cognitive performance in the CANTAB. Need AC, et al.

Hum Mol Genet, 2009 Dec 1. PMID 19734545. Does parental expressed emotion moderate genetic effects in ADHD? An exploration using a genome wide association scan. Sonuga-Barke EJ, et al. Am J Med Genet B Neuropsychiatr Genet, 2008 Dec 5. PMID 18846501. Systematic identification of SH3 domain-mediated human protein-protein interactions by peptide array target screening. Wu C, et al. Proteomics, 2007 Jun. PMID 17474147.

Images



Antibody Reactive Against Recombinant Protein. Western Blot detection against Immunogen (49.61 KDa) .



Detection limit for recombinant GST tagged RIT2 is approximately 0.3 ng/ml as a capture antibody.

Please note: All products are 'FOR RESEARCH USE ONLY. NOT FOR USE IN DIAGNOSTIC OR THERAPEUTIC PROCEDURES'.