

# RNASEH1 Antibody (monoclonal) (M01)

Mouse monoclonal antibody raised against a partial recombinant RNASEH1.

Catalog # AT3652a

## Product Information

---

<b>Application</b>	WB, E
<b>Primary Accession</b>	<a href="#">O60930</a>
<b>Other Accession</b>	<a href="#">NM_002936</a>
<b>Reactivity</b>	Human, Rat
<b>Host</b>	mouse
<b>Clonality</b>	monoclonal
<b>Isotype</b>	IgG2a Kappa
<b>Clone Names</b>	5D10
<b>Calculated MW</b>	32064

## Additional Information

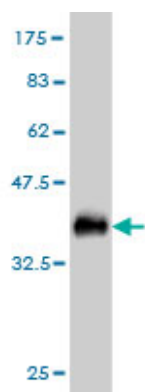
---

<b>Gene ID</b>	246243
<b>Other Names</b>	Ribonuclease H1, RNase H1, Ribonuclease H type II, RNASEH1, RNH1
<b>Target/Specificity</b>	RNASEH1 (NP_002927, 189 a.a. ~ 286 a.a) partial recombinant protein with GST tag. MW of the GST tag alone is 26 KDa.
<b>Dilution</b>	WB~~1:500~1000 E~~N/A
<b>Format</b>	Clear, colorless solution in phosphate buffered saline, pH 7.2 .
<b>Storage</b>	Store at -20°C or lower. Aliquot to avoid repeated freezing and thawing.
<b>Precautions</b>	RNASEH1 Antibody (monoclonal) (M01) is for research use only and not for use in diagnostic or therapeutic procedures.

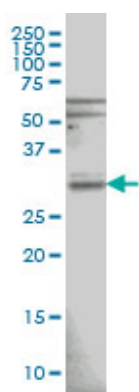
## References

---

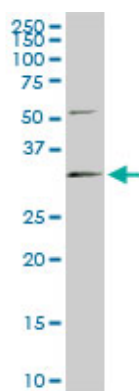
Specific recognition of RNA/DNA hybrid and enhancement of human RNase H1 activity by HBD. Nowotny M, et al. EMBO J, 2008 Apr 9. PMID 18337749. Structure of human RNase H1 complexed with an RNA/DNA hybrid: insight into HIV reverse transcription. Nowotny M, et al. Mol Cell, 2007 Oct 26. PMID 17964265. Human RNase H1 discriminates between subtle variations in the structure of the heteroduplex substrate. Lima WF, et al. Mol Pharmacol, 2007 Jan. PMID 17028158. The positional influence of the helical geometry of the heteroduplex substrate on human RNase H1 catalysis. Lima WF, et al. Mol Pharmacol, 2007 Jan. PMID 17028157. Signal sequence and keyword trap in silico for selection of full-length human cDNAs encoding secretion or membrane proteins from oligo-capped cDNA libraries. Otsuki T, et al. DNA Res, 2005. PMID 16303743.



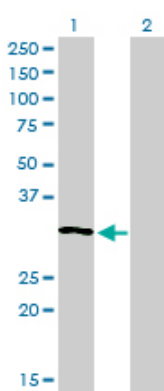
Antibody Reactive Against Recombinant Protein. Western Blot detection against Immunogen (36.52 KDa) .



RNASEH1 monoclonal antibody (M01), clone 5D10  
Western Blot analysis of RNASEH1 expression in HeLa (Cat # AT3652a )



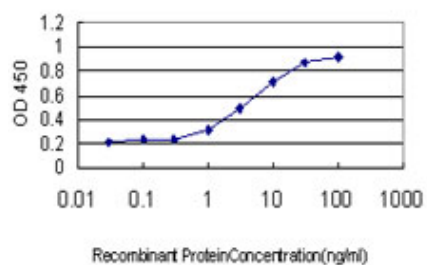
RNASEH1 monoclonal antibody (M01), clone 5D10.  
Western Blot analysis of RNASEH1 expression in PC-12 (Cat # AT3652a )



Western Blot analysis of RNASEH1 expression in transfected 293T cell line by RNASEH1 monoclonal antibody (M01), clone 5D10.

Lane 1: RNASEH1 transfected lysate(32.1 KDa).  
Lane 2: Non-transfected lysate.

Detection limit for recombinant GST tagged RNASEH1 is approximately 0.03ng/ml as a capture antibody.



Please note: All products are 'FOR RESEARCH USE ONLY. NOT FOR USE IN DIAGNOSTIC OR THERAPEUTIC PROCEDURES'.