

RORB Antibody (monoclonal) (M08)

Mouse monoclonal antibody raised against a partial recombinant RORB.

Catalog # AT3692a

Product Information

Application	WB, E
Primary Accession	Q92753
Other Accession	NM_006914
Reactivity	Human
Host	mouse
Clonality	monoclonal
Isotype	IgG1 Lambda
Clone Names	1E6
Calculated MW	53220

Additional Information

Gene ID	6096
Other Names	Nuclear receptor ROR-beta, Nuclear receptor RZR-beta, Nuclear receptor subfamily 1 group F member 2, Retinoid-related orphan receptor-beta, RORB, NR1F2, RZRB
Target/Specificity	RORB (NP_008845, 136 a.a. ~ 224 a.a) partial recombinant protein with GST tag. MW of the GST tag alone is 26 KDa.
Dilution	WB~~1:500~1000 E~~N/A
Format	Clear, colorless solution in phosphate buffered saline, pH 7.2 .
Storage	Store at -20°C or lower. Aliquot to avoid repeated freezing and thawing.
Precautions	RORB Antibody (monoclonal) (M08) is for research use only and not for use in diagnostic or therapeutic procedures.

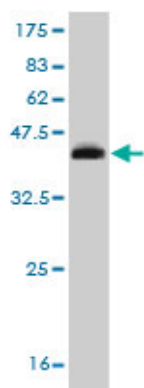
Background

The protein encoded by this gene is a member of the NR1 subfamily of nuclear hormone receptors. It is a DNA-binding protein that can bind as a monomer or as a homodimer to hormone response elements upstream of several genes to enhance the expression of those genes. The specific functions of this protein are not known, but it has been shown to interact with NM23-2, a nucleoside diphosphate kinase involved in organogenesis and differentiation.

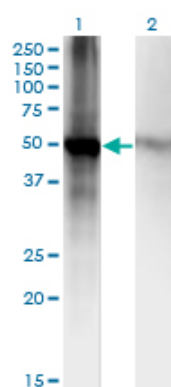
References

Personalized smoking cessation: interactions between nicotine dose, dependence and quit-success genotype score. Rose JE, et al. Mol Med, 2010 Jul-Aug. PMID 20379614. Human variation in alcohol response is influenced by variation in neuronal signaling genes. Joslyn G, et al. Alcohol Clin Exp Res, 2010 May. PMID 20201926. Evidence for genetic association of RORB with bipolar disorder. McGrath CL, et al. BMC Psychiatry, 2009 Nov 12. PMID 19909500. Association study of 21 circadian genes with bipolar I disorder, schizoaffective disorder, and schizophrenia. Mansour HA, et al. Bipolar Disord, 2009 Nov. PMID 19839995. Automated yeast two-hybrid screening for nuclear receptor-interacting proteins. Albers M, et al. Mol Cell Proteomics, 2005 Feb. PMID 15604093.

Images

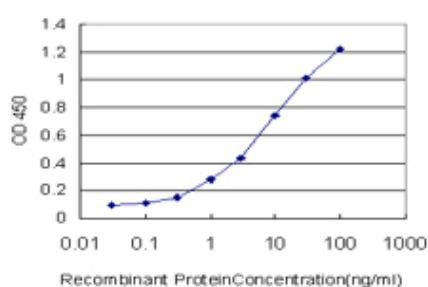


Antibody Reactive Against Recombinant Protein. Western Blot detection against Immunogen (35.53 KDa) .



Western Blot analysis of RORB expression in transfected 293T cell line by RORB monoclonal antibody (M08), clone 1E5.

Lane 1: RORB transfected lysate (Predicted MW: 52.1 KDa).
Lane 2: Non-transfected lysate.



Detection limit for recombinant GST tagged RORB is approximately 0.1 ng/ml as a capture antibody.

Please note: All products are 'FOR RESEARCH USE ONLY. NOT FOR USE IN DIAGNOSTIC OR THERAPEUTIC PROCEDURES'.