

RP13-297E16.1 Antibody (monoclonal) (M02)

Mouse monoclonal antibody raised against a partial recombinant RP13-297E16.1.

Catalog # AT3694a

Product Information

Application	WB, IHC, IF, E
Primary Accession	Q02040
Other Accession	NM_005088
Reactivity	Human
Host	mouse
Clonality	monoclonal
Isotype	IgG2b Kappa
Clone Names	2G8
Calculated MW	80735

Additional Information

Gene ID	8227
Other Names	A-kinase anchor protein 17A, AKAP-17A, 721P, B-lymphocyte antigen, Protein XE7, Protein kinase A-anchoring protein 17A, PRKA17A, Splicing factor, arginine/serine-rich 17A, AKAP17A, CXYorf3, DXYS155E, SFRS17A, XE7
Target/Specificity	SFRS17A (NP_005079, 53 a.a. ~ 156 a.a) partial recombinant protein with GST tag. MW of the GST tag alone is 26 KDa.
Dilution	WB~~1:500~1000 IHC~~1:100~500 IF~~1:50~200 E~~N/A
Format	Clear, colorless solution in phosphate buffered saline, pH 7.2 .
Storage	Store at -20°C or lower. Aliquot to avoid repeated freezing and thawing.
Precautions	RP13-297E16.1 Antibody (monoclonal) (M02) is for research use only and not for use in diagnostic or therapeutic procedures.

Background

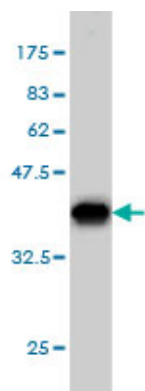
This locus encodes a protein kinase A anchoring protein. The encoded protein is part of the spliceosome complex and is involved in the regulation of alternate splicing in some mRNA precursors. Alternatively spliced transcript variants have been identified for this gene.

References

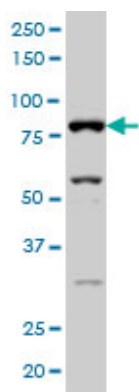
Splicing factor arginine/serine-rich 17A (SFRS17A) is an A-kinase anchoring protein that targets protein kinase A to splicing factor compartments. Jarnaess E, et al. J Biol Chem, 2009 Dec 11. PMID

19840947.Large-scale mapping of human protein-protein interactions by mass spectrometry. Ewing RM, et al. Mol Syst Biol, 2007. PMID 17353931.Global, in vivo, and site-specific phosphorylation dynamics in signaling networks. Olsen JV, et al. Cell, 2006 Nov 3. PMID 17081983.XE7: a novel splicing factor that interacts with ASF/SF2 and ZNF265. Mangs AH, et al. Nucleic Acids Res, 2006. PMID 16982639.Towards a proteome-scale map of the human protein-protein interaction network. Rual JF, et al. Nature, 2005 Oct 20. PMID 16189514.

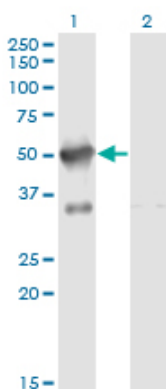
Images



Antibody Reactive Against Recombinant Protein.Western Blot detection against Immunogen (37.18 KDa) .

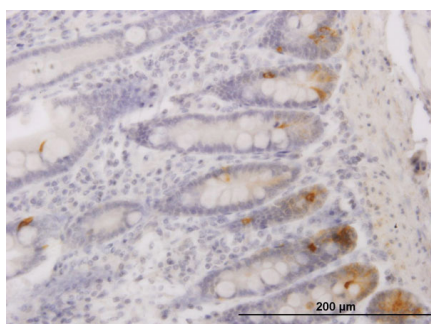


SFRS17A monoclonal antibody (M02), clone 2G8 Western Blot analysis of SFRS17A expression in Hela S3 NE ((Cat # AT3694a)

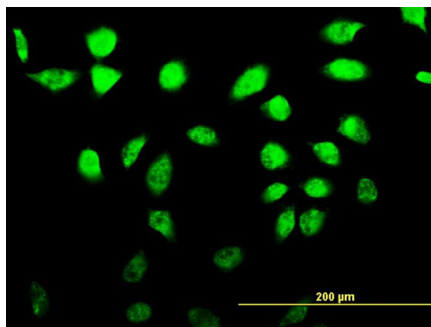


Western Blot analysis of SFRS17A expression in transfected 293T cell line by SFRS17A monoclonal antibody (M02), clone 2G8.

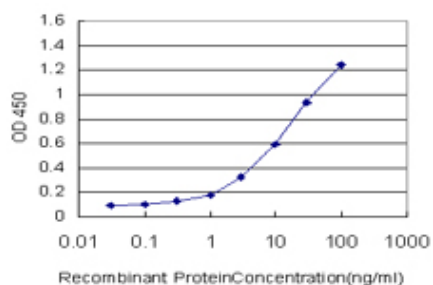
Lane 1: SFRS17A transfected lysate(51.5 KDa).
Lane 2: Non-transfected lysate.



Immunoperoxidase of monoclonal antibody to SFRS17A on formalin-fixed paraffin-embedded human small Intestine. [antibody concentration 1 ug/ml]



Immunofluorescence of monoclonal antibody to SFRS17A on HeLa cell. [antibody concentration 10 ug/ml]



Detection limit for recombinant GST tagged SFRS17A is approximately 0.1ng/ml as a capture antibody.

Please note: All products are 'FOR RESEARCH USE ONLY. NOT FOR USE IN DIAGNOSTIC OR THERAPEUTIC PROCEDURES'.