

RP6-213H19.1 Antibody (monoclonal) (M01)

Mouse monoclonal antibody raised against a full length recombinant RP6-213H19.1.
Catalog # AT3697a

Product Information

Application	WB, IF, E
Primary Accession	Q9P289
Other Accession	BC017213
Reactivity	Human
Host	mouse
Clonality	monoclonal
Isotype	IgG2b Kappa
Clone Names	2G6
Calculated MW	46529

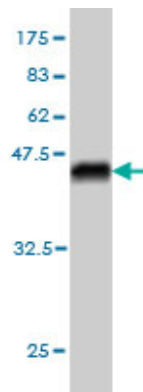
Additional Information

Gene ID	51765
Other Names	Serine/threonine-protein kinase 26, MST3 and SOK1-related kinase, Mammalian STE20-like protein kinase 4, MST-4, STE20-like kinase MST4, Serine/threonine-protein kinase MASK, STK26 (HGNC:18174)
Target/Specificity	RP6-213H19.1 (AAH17213, 1 a.a. ~ 137 a.a) full-length recombinant protein with GST tag. MW of the GST tag alone is 26 KDa.
Dilution	WB~~1:500~1000 IF~~1:50~200 E~~N/A
Format	Clear, colorless solution in phosphate buffered saline, pH 7.2 .
Storage	Store at -20°C or lower. Aliquot to avoid repeated freezing and thawing.
Precautions	RP6-213H19.1 Antibody (monoclonal) (M01) is for research use only and not for use in diagnostic or therapeutic procedures.

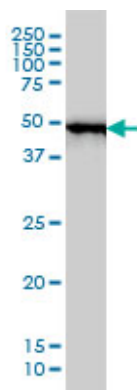
Background

The product of this gene is a member of the GCK group III family of kinases, which are a subset of the Ste20-like kinases. The encoded protein contains an amino-terminal kinase domain, and a carboxy-terminal regulatory domain that mediates homodimerization. The protein kinase localizes to the Golgi apparatus and is specifically activated by binding to the Golgi matrix protein GM130. It is also cleaved by caspase-3 in vitro, and may function in the apoptotic pathway. Several alternatively spliced transcript variants of this gene have been described, but the full-length nature of some of these variants has not been determined. [provided by RefSeq]

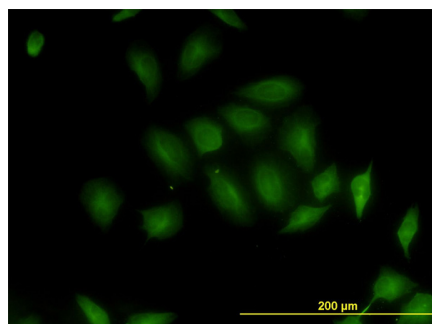
Images



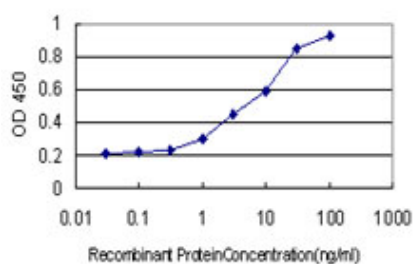
Antibody Reactive Against Recombinant Protein. Western Blot detection against Immunogen (40.81 KDa) .



RP6-213H19.1 monoclonal antibody (M01), clone 2G6
Western Blot analysis of RP6-213H19.1 expression in MCF-7 (Cat # AT3697a)



Immunofluorescence of monoclonal antibody to RP6-213H19.1 on HeLa cell. [antibody concentration 10 ug/ml]



Detection limit for recombinant GST tagged RP6-213H19.1 is approximately 0.3ng/ml as a capture antibody.

Please note: All products are 'FOR RESEARCH USE ONLY. NOT FOR USE IN DIAGNOSTIC OR THERAPEUTIC PROCEDURES'.