

## RPL4 Antibody (monoclonal) (M01)

Mouse monoclonal antibody raised against a partial recombinant RPL4.

Catalog # AT3709a

### Product Information

---

<b>Application</b>	WB, IF, E
<b>Primary Accession</b>	<a href="#">P36578</a>
<b>Other Accession</b>	<a href="#">NM_000968</a>
<b>Reactivity</b>	Human, Mouse, Rat
<b>Host</b>	mouse
<b>Clonality</b>	monoclonal
<b>Isotype</b>	IgG2a Kappa
<b>Clone Names</b>	4A3
<b>Calculated MW</b>	47697

### Additional Information

---

<b>Gene ID</b>	6124
<b>Other Names</b>	60S ribosomal protein L4, 60S ribosomal protein L1, RPL4, RPL1
<b>Target/Specificity</b>	RPL4 (NP_000959, 251 a.a. ~ 350 a.a) partial recombinant protein with GST tag. MW of the GST tag alone is 26 KDa.
<b>Dilution</b>	WB~~1:500~1000 IF~~1:50~200 E~~N/A
<b>Format</b>	Clear, colorless solution in phosphate buffered saline, pH 7.2 .
<b>Storage</b>	Store at -20°C or lower. Aliquot to avoid repeated freezing and thawing.
<b>Precautions</b>	RPL4 Antibody (monoclonal) (M01) is for research use only and not for use in diagnostic or therapeutic procedures.

### Background

---

Ribosomes, the organelles that catalyze protein synthesis, consist of a small 40S subunit and a large 60S subunit. Together these subunits are composed of 4 RNA species and approximately 80 structurally distinct proteins. This gene encodes a ribosomal protein that is a component of the 60S subunit. The protein belongs to the L4E family of ribosomal proteins. It is located in the cytoplasm. As is typical for genes encoding ribosomal proteins, there are multiple processed pseudogenes of this gene dispersed through the genome.

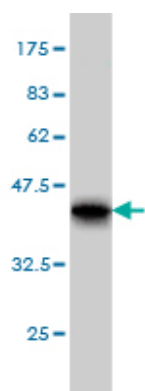
### References

---

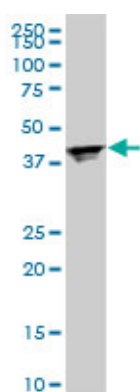
1. Transmembrane and coiled-coil domain family 1 is a novel protein of the endoplasmic reticulum. Zhang C,

Kho YS, Wang Z, Chiang YT, Ng GK, Shaw PC, Wang Y, Qi RZPLoS One. 2014 Jan 14;9(1):e85206. doi: 10.1371/journal.pone.0085206. eCollection 2014 Jan 14.2.Shwachman-Bodian Diamond syndrome is a multi-functional protein implicated in cellular stress responses.Ball HL, Zhang B, Riches JJ, Gandhi R, Li J, Rommens JM, Myers JS.Hum Mol Genet. 2009 Oct 1;18(19):3684-95. Epub 2009 Jul 14.

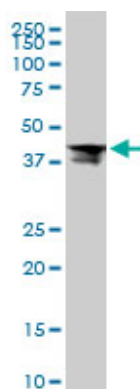
## Images



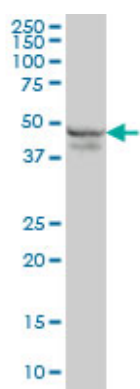
Antibody Reactive Against Recombinant Protein.Western Blot detection against Immunogen (36.74 KDa) .



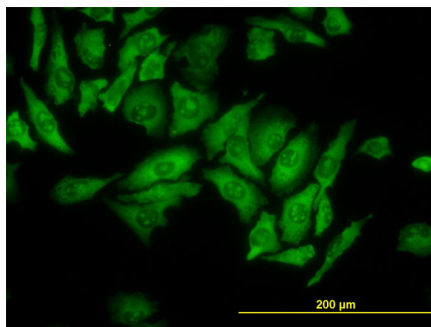
RPL4 monoclonal antibody (M01), clone 4A3. Western Blot analysis of RPL4 expression in PC-12 ( (Cat # AT3709a )



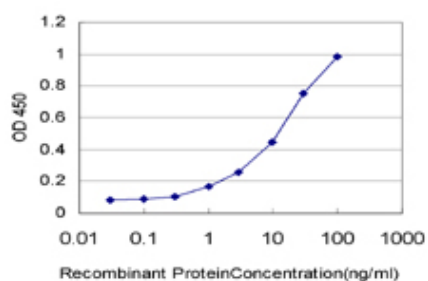
RPL4 monoclonal antibody (M01), clone 4A3. Western Blot analysis of RPL4 expression in Raw 264.7 ( (Cat # AT3709a )



RPL4 monoclonal antibody (M01), clone 4A3 Western Blot analysis of RPL4 expression in K-562 ( (Cat # AT3709a )



Immunofluorescence of monoclonal antibody to RPL4 on HeLa cell. [antibody concentration 10 ug/ml]



Detection limit for recombinant GST tagged RPL4 is approximately 0.3ng/ml as a capture antibody.

Please note: All products are 'FOR RESEARCH USE ONLY. NOT FOR USE IN DIAGNOSTIC OR THERAPEUTIC PROCEDURES'.