

RPS6KA2 Antibody (monoclonal) (M01)

Mouse monoclonal antibody raised against a partial recombinant RPS6KA2.

Catalog # AT3720a

Product Information

Application	WB, IHC, IF
Primary Accession	Q15349
Other Accession	BC002363
Reactivity	Human
Host	mouse
Clonality	monoclonal
Isotype	IgG2a Kappa
Clone Names	1F6
Calculated MW	83239

Additional Information

Gene ID	6196
Other Names	Ribosomal protein S6 kinase alpha-2, S6K-alpha-2, 90 kDa ribosomal protein S6 kinase 2, p90-RSK 2, p90RSK2, MAP kinase-activated protein kinase 1c, MAPK-activated protein kinase 1c, MAPKAP kinase 1c, MAPKAPK-1c, Ribosomal S6 kinase 3, RSK-3, pp90RSK3, RPS6KA2, MAPKAPK1C, RSK3
Target/Specificity	RPS6KA2 (AAH02363, 631 a.a. ~ 733 a.a) partial recombinant protein with GST tag. MW of the GST tag alone is 26 KDa.
Dilution	WB~~1:500~1000 IHC~~1:100~500 IF~~1:50~200
Format	Clear, colorless solution in phosphate buffered saline, pH 7.2 .
Storage	Store at -20°C or lower. Aliquot to avoid repeated freezing and thawing.
Precautions	RPS6KA2 Antibody (monoclonal) (M01) is for research use only and not for use in diagnostic or therapeutic procedures.

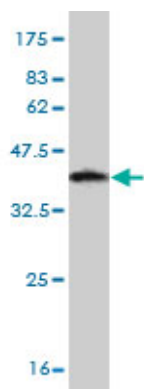
Background

This gene encodes a member of the RSK (ribosomal S6 kinase) family of serine/threonine kinases. This kinase contains 2 non-identical kinase catalytic domains and phosphorylates various substrates, including members of the mitogen-activated kinase (MAPK) signalling pathway. The activity of this protein has been implicated in controlling cell growth and differentiation. Alternate transcriptional splice variants, encoding different isoforms, have been characterized.

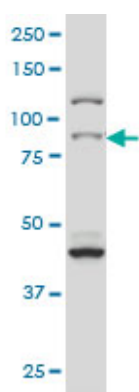
References

1.p90 ribosomal S6 kinase 3 contributes to cardiac insufficiency in β -tropomyosin Glu180Gly transgenic mice. Passariello CL, Gayanilo M, Kritzer MD, Thakur H, Cozacov Z, Rusconi F, Wieczorek D, Sanders M, Li J, Kapiloff MS. *Am J Physiol Heart Circ Physiol*. 2013 Oct;305(7):H1010-9. doi: 10.1152/ajpheart.00237.2013. Epub 2013 Aug 2.

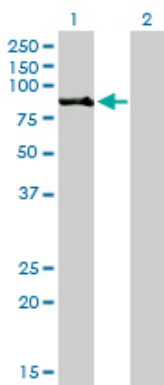
Images



Antibody Reactive Against Recombinant Protein. Western Blot detection against Immunogen (37.07 KDa) .

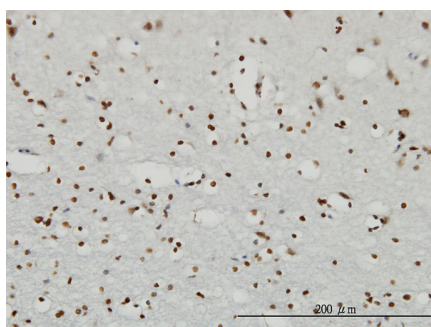


RPS6KA2 monoclonal antibody (M01), clone 1F6 Western Blot analysis of RPS6KA2 expression in HeLa S3 NE (Cat # AT3720a)



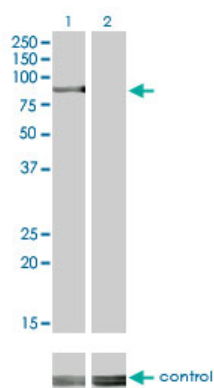
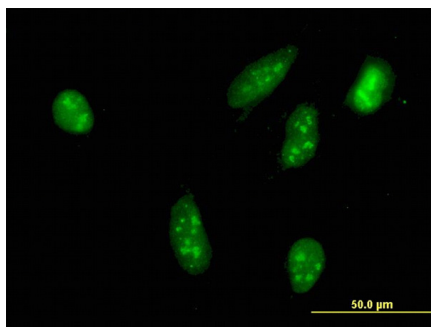
Western Blot analysis of RPS6KA2 expression in transfected 293T cell line by RPS6KA2 monoclonal antibody (M01), clone 1F6.

Lane 1: RPS6KA2 transfected lysate (83.2 KDa).
Lane 2: Non-transfected lysate.

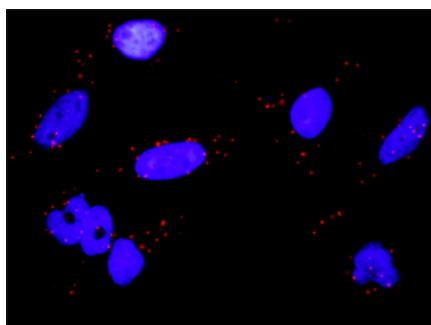


Immunoperoxidase of monoclonal antibody to RPS6KA2 on formalin-fixed paraffin-embedded human cerebral cortex. [antibody concentration 3 ug/ml]

Immunofluorescence of monoclonal antibody to RPS6KA2 on HeLa cell. [antibody concentration 10 ug/ml]



Western blot analysis of RPS6KA2 over-expressed 293 cell line, cotransfected with RPS6KA2 Validated Chimera RNAi (Cat # AT3720a)



Proximity Ligation Analysis of protein-protein interactions between MAPK3 and RPS6KA2 HeLa cells were stained with anti-MAPK3 rabbit purified polyclonal 1:1200 and anti-RPS6KA2 mouse monoclonal antibody 1:50. Each red dot represents the detection of protein-protein interaction complex, and nuclei were counterstained with DAPI (blue).

Please note: All products are 'FOR RESEARCH USE ONLY. NOT FOR USE IN DIAGNOSTIC OR THERAPEUTIC PROCEDURES'.