

RRM2 Antibody (monoclonal) (M01)

Mouse monoclonal antibody raised against a partial recombinant RRM2.

Catalog # AT3730a

Product Information

Application	WB, IHC, IF, IP, E
Primary Accession	P31350
Other Accession	NM_001034
Reactivity	Human
Host	Mouse
Clonality	monoclonal
Isotype	IgG1 Kappa
Clone Names	10
Calculated MW	44878

Additional Information

Gene ID	6241
Other Names	Ribonucleoside-diphosphate reductase subunit M2, Ribonucleotide reductase small chain, Ribonucleotide reductase small subunit, RRM2, RR2
Target/Specificity	RRM2 (NP_001025, 1 a.a. ~ 110 a.a) partial recombinant protein with GST tag. MW of the GST tag alone is 26 KDa.
Dilution	WB~~1:500~1000 IHC~~1:100~500 IF~~1:50~200 IP~~N/A E~~N/A
Format	Clear, colorless solution in phosphate buffered saline, pH 7.2 .
Storage	Store at -20°C or lower. Aliquot to avoid repeated freezing and thawing.
Precautions	RRM2 Antibody (monoclonal) (M01) is for research use only and not for use in diagnostic or therapeutic procedures.

Background

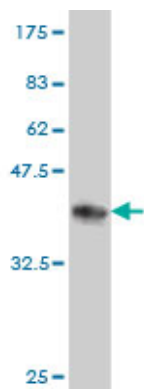
This gene encodes one of two non-identical subunits for ribonucleotide reductase. This reductase catalyzes the formation of deoxyribonucleotides from ribonucleotides. Synthesis of the encoded protein (M2) is regulated in a cell-cycle dependent fashion. Transcription from this gene can initiate from alternative promoters, which results in two isoforms that differ in the lengths of their N-termini. Related pseudogenes have been identified on chromosomes 1 and X.

References

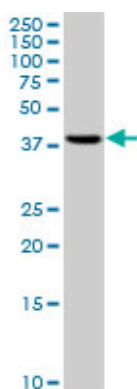
1.RRM1 maintains centrosomal integrity via CHK1 and CDK1 signaling during replication stress.Kim SH, Park

ER, Joo HY, Shen YN, Hong SH, Kim CH, Singh R, Lee KH, Shin HJ. *Cancer Lett.* 2014 Jan 14. pii: S0304-3835(14)00014-7. doi: 10.1016/j.canlet.2013.12.031.2. KRAS-mediated Up-regulation of RRM2 Expression Is Essential for the Proliferation of Colorectal Cancer Cell Lines. Yoshida Y, Tsunoda T, Doi K, Tanaka Y, Fujimoto T, Machida T, Ota T, Koyanagi M, Takashima Y, Sasazuki T, Kuroki M, Iwasaki A, Shirasawa S. *Anticancer Research* July 2011 vol. 31 no. 7 2535-25393. Epstein-Barr virus episome stability is coupled to a delay in replication timing. Zhou J, Snyder A, Lieberman PM. *J Virol.* 2009 Mar;83(5):2154-62. Epub 2008 Dec 10.4. Quantitative phosphoproteome profiling of Wnt3a mediated signaling network: indicating the involvement of ribonucleoside-diphosphate reductase M2 subunit phosphorylation at residue serine-20 in canonical Wnt signal transduction. Tang LY, Deng N, Wang LS, Dai J, Wang ZL, Jiang XS, Li SJ, Li L, Sheng QH, Wu DQ, Li L, Zeng R. *Mol Cell Proteomics.* 2007 Nov;6(11):1952-67. Epub 2007 Aug 12.

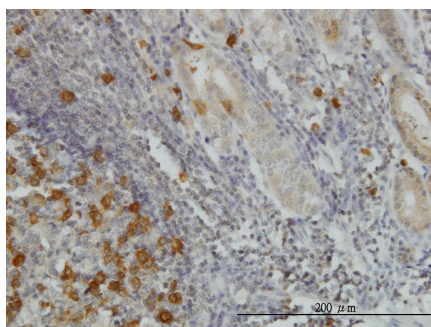
Images



Antibody Reactive Against Recombinant Protein. Western Blot detection against Immunogen (37.84 KDa) .

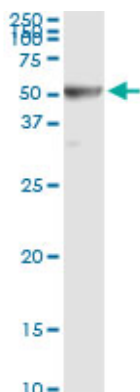
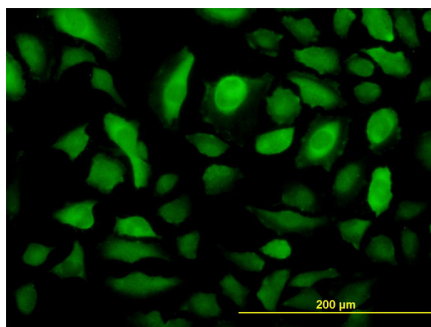


RRM2 monoclonal antibody (M01), clone 1E1. Western Blot analysis of RRM2 expression in HepG2 (Cat # AT3730a)

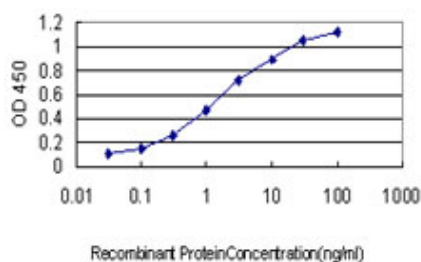


Immunoperoxidase of monoclonal antibody to RRM2 on formalin-fixed paraffin-embedded human stomach. [antibody concentration 1.5 ug/ml]

Immunofluorescence of monoclonal antibody to RRM2 on HeLa cell. [antibody concentration 10 ug/ml]



Immunoprecipitation of RRM2 transfected lysate using anti-RRM2 monoclonal antibody and Protein A Magnetic Bead ([U0007](#)), and immunoblotted with RRM2 MaxPab rabbit polyclonal antibody.



Detection limit for recombinant GST tagged RRM2 is approximately 0.03ng/ml as a capture antibody.

Please note: All products are 'FOR RESEARCH USE ONLY. NOT FOR USE IN DIAGNOSTIC OR THERAPEUTIC PROCEDURES'.