

## RSU1 Antibody (monoclonal) (M01)

Mouse monoclonal antibody raised against a full length recombinant RSU1.

Catalog # AT3732a

### Product Information

---

|                          |                          |
|--------------------------|--------------------------|
| <b>Application</b>       | WB, E                    |
| <b>Primary Accession</b> | <a href="#">Q15404</a>   |
| <b>Other Accession</b>   | <a href="#">BC005993</a> |
| <b>Reactivity</b>        | Human                    |
| <b>Host</b>              | mouse                    |
| <b>Clonality</b>         | monoclonal               |
| <b>Isotype</b>           | IgG1 Kappa               |
| <b>Clone Names</b>       | 1C6                      |
| <b>Calculated MW</b>     | 31540                    |

### Additional Information

---

|                           |  |
|---------------------------|--|
| <b>Gene ID</b>            | 6251   |
| <b>Other Names</b>        | Ras suppressor protein 1, RSP-1, Rsu-1, RSU1, RSP1   |
| <b>Target/Specificity</b> | RSU1 (AAH05993, 1 a.a. ~ 277 a.a) full-length recombinant protein with GST tag. MW of the GST tag alone is 26 KDa. |
| <b>Dilution</b>           | WB~~1:500~1000 E~~N/A  |
| <b>Format</b>             | Clear, colorless solution in phosphate buffered saline, pH 7.2 .   |
| <b>Storage</b>            | Store at -20°C or lower. Aliquot to avoid repeated freezing and thawing.   |
| <b>Precautions</b>        | RSU1 Antibody (monoclonal) (M01) is for research use only and not for use in diagnostic or therapeutic procedures. |

### Background

---

This gene encodes a protein that is involved in the Ras signal transduction pathway, growth inhibition, and nerve-growth factor induced differentiation processes, as determined in mouse and human cell line studies. In mouse, the encoded protein was initially isolated based on its ability to inhibit v-Ras transformation. Multiple alternatively spliced transcript variants for this gene have been reported; one of these variants was found only in glioma tumors.

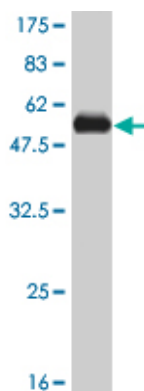
### References

---

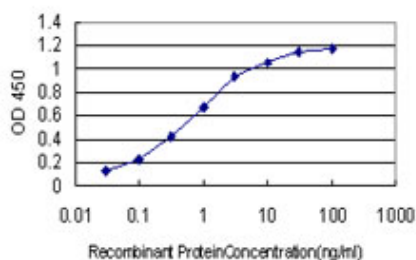
Personalized smoking cessation: interactions between nicotine dose, dependence and quit-success genotype score. Rose JE, et al. Mol Med, 2010 Jul-Aug. PMID 20379614. Proteomic analysis reveals Hrs

ubiquitin-interacting motif-mediated ubiquitin signaling in multiple cellular processes. Pridgeon JW, et al. FEBS J, 2009 Jan. PMID 19019082. The Rsu-1-PINCH1-ILK complex is regulated by Ras activation in tumor cells. Dougherty GW, et al. Eur J Cell Biol, 2008 Sep. PMID 18436335. Large-scale mapping of human protein-protein interactions by mass spectrometry. Ewing RM, et al. Mol Syst Biol, 2007. PMID 17353931. A scan of chromosome 10 identifies a novel locus showing strong association with late-onset Alzheimer disease. Grupe A, et al. Am J Hum Genet, 2006 Jan. PMID 16385451.

## Images



Antibody Reactive Against Recombinant Protein. Western Blot detection against Immunogen (56.21 KDa) .



Detection limit for recombinant GST tagged RSU1 is approximately 0.03ng/ml as a capture antibody.

Please note: All products are 'FOR RESEARCH USE ONLY. NOT FOR USE IN DIAGNOSTIC OR THERAPEUTIC PROCEDURES'.