

# S100A1 Antibody (monoclonal) (M01)

Mouse monoclonal antibody raised against a partial recombinant S100A1.

Catalog # AT3750a

## Product Information

---

<b>Application</b>	WB, E
<b>Primary Accession</b>	<a href="#">P23297</a>
<b>Other Accession</b>	<a href="#">NM_006271</a>
<b>Reactivity</b>	Human
<b>Host</b>	mouse
<b>Clonality</b>	monoclonal
<b>Isotype</b>	IgG1 kappa
<b>Clone Names</b>	1D5
<b>Calculated MW</b>	10546

## Additional Information

---

<b>Gene ID</b>	6271
<b>Other Names</b>	Protein S100-A1, S-100 protein alpha chain, S-100 protein subunit alpha, S100 calcium-binding protein A1, S100A1, S100A
<b>Target/Specificity</b>	S100A1 (NP_006262, 1 a.a. ~ 75 a.a) partial recombinant protein with GST tag. MW of the GST tag alone is 26 KDa.
<b>Dilution</b>	WB~~1:500~1000 E~~N/A
<b>Format</b>	Clear, colorless solution in phosphate buffered saline, pH 7.2 .
<b>Storage</b>	Store at -20°C or lower. Aliquot to avoid repeated freezing and thawing.
<b>Precautions</b>	S100A1 Antibody (monoclonal) (M01) is for research use only and not for use in diagnostic or therapeutic procedures.

## Background

---

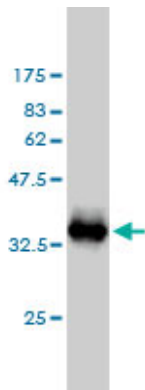
The protein encoded by this gene is a member of the S100 family of proteins containing 2 EF-hand calcium-binding motifs. S100 proteins are localized in the cytoplasm and/or nucleus of a wide range of cells, and involved in the regulation of a number of cellular processes such as cell cycle progression and differentiation. S100 genes include at least 13 members which are located as a cluster on chromosome 1q21. This protein may function in stimulation of Ca<sup>2+</sup>-induced Ca<sup>2+</sup> release, inhibition of microtubule assembly, and inhibition of protein kinase C-mediated phosphorylation. Reduced expression of this protein has been implicated in cardiomyopathies.

## References

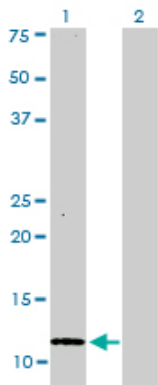
---

1.FISH Scoring on Paraffin Sections Versus Single-cell Suspension for Chromophobe Renal Carcinoma and Renal Oncocytoma.Brunelli M, Segala D, Delahunt B, Parolini C, Bersani S, Cheng L, Eble JN, Chilosi M, Gobbo S, Martignoni G.Anticancer Res. 2011 Oct;31(10):3137-42.

Images

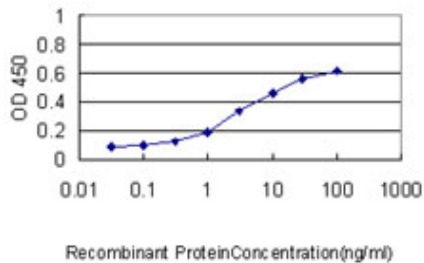


Antibody Reactive Against Recombinant Protein.Western Blot detection against Immunogen (33.99 KDa) .



Western Blot analysis of S100A1 expression in transfected 293T cell line by S100A1 monoclonal antibody (M01), clone 1D5.

Lane 1: S100A1 transfected lysate(10.5 KDa).  
Lane 2: Non-transfected lysate.



Detection limit for recombinant GST tagged S100A1 is approximately 0.3ng/ml as a capture antibody.

Please note: All products are 'FOR RESEARCH USE ONLY. NOT FOR USE IN DIAGNOSTIC OR THERAPEUTIC PROCEDURES'.