

SAE1 Antibody (monoclonal) (M01)

Mouse monoclonal antibody raised against a full length recombinant SAE1.

Catalog # AT3766a

Product Information

Application	WB, IHC, IF, E
Primary Accession	Q9UBE0
Other Accession	BC000344
Reactivity	Human
Host	Mouse
Clonality	monoclonal
Isotype	IgG1 lambda
Clone Names	1G4-1G5
Calculated MW	38450

Additional Information

Gene ID	10055
Other Names	SUMO-activating enzyme subunit 1, Ubiquitin-like 1-activating enzyme E1A, SUMO-activating enzyme subunit 1, N-terminally processed, SAE1, AOS1, SUA1, UBLE1A
Target/Specificity	SAE1 (AAH00344, 1 a.a. ~ 346 a.a) full-length recombinant protein with GST tag. MW of the GST tag alone is 26 KDa.
Dilution	WB~~1:500~1000 IHC~~1:100~500 IF~~1:50~200 E~~N/A
Format	Clear, colorless solution in phosphate buffered saline, pH 7.2 .
Storage	Store at -20°C or lower. Aliquot to avoid repeated freezing and thawing.
Precautions	SAE1 Antibody (monoclonal) (M01) is for research use only and not for use in diagnostic or therapeutic procedures.

Background

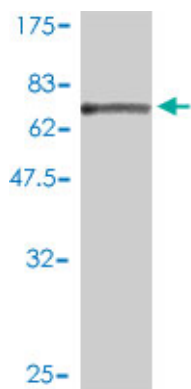
Posttranslational modification of proteins by the addition of the small protein SUMO (see SUMO1; MIM 601912), or sumoylation, regulates protein structure and intracellular localization. SAE1 and UBA2 (MIM 613295) form a heterodimer that functions as a SUMO-activating enzyme for the sumoylation of proteins (Okuma et al., 1999 [PubMed 9920803]).

References

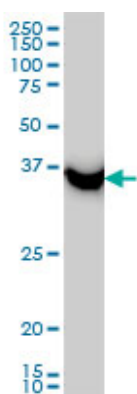
1.Autoantibodies to small ubiquitin-like modifier activating enzymes in Japanese patients with

dermatomyositis: comparison with a UK Caucasian cohort.Fujimoto M, Matsushita T, Hamaguchi Y, Kaji K, Asano Y, Ogawa F, Yamaoka T, Fujikawa K, Tsukada T, Sato K, Echigo T, Hasegawa M, Takehara K.Ann Rheum Dis. 2012 Jul 26.

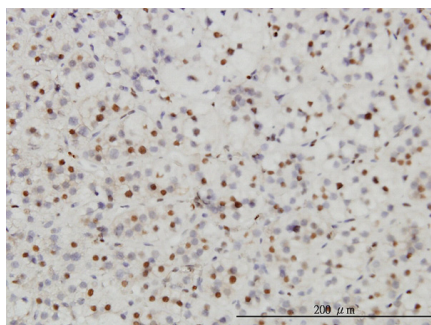
Images



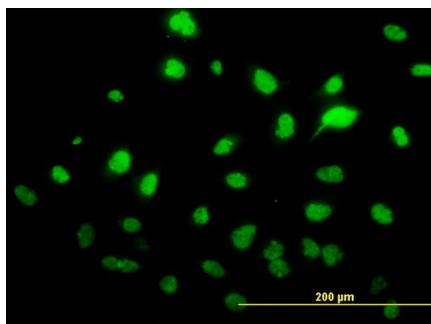
Antibody Reactive Against Recombinant Protein.Western Blot detection against Immunogen (63.8 KDa) .



SAE1 monoclonal antibody (M01), clone 1G4-1G5 Western Blot analysis of SAE1 expression in HeLa ((Cat # AT3766a)

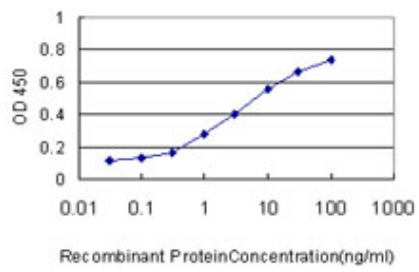


Immunoperoxidase of monoclonal antibody to SAE1 on formalin-fixed paraffin-embedded human adrenal gland. [antibody concentration 3 ug/ml]



Immunofluorescence of monoclonal antibody to SAE1 on HeLa cell. [antibody concentration 10 ug/ml]

Detection limit for recombinant GST tagged SAE1 is approximately 0.1ng/ml as a capture antibody.



Please note: All products are 'FOR RESEARCH USE ONLY. NOT FOR USE IN DIAGNOSTIC OR THERAPEUTIC PROCEDURES'.