

SAMM50 Antibody (monoclonal) (M04)

Mouse monoclonal antibody raised against a full length recombinant SAMM50.

Catalog # AT3770a

Product Information

Application	WB
Primary Accession	Q9Y512
Other Accession	BC007830
Reactivity	Human
Host	mouse
Clonality	monoclonal
Isotype	IgG2b Kappa
Clone Names	2A9
Calculated MW	51976

Additional Information

Gene ID	25813
Other Names	Sorting and assembly machinery component 50 homolog, Transformation-related gene 3 protein, TRG-3, SAMM50, SAM50
Target/Specificity	SAMM50 (AAH07830, 1 a.a. ~ 468 a.a) full-length recombinant protein with GST tag. MW of the GST tag alone is 26 KDa.
Dilution	WB~~1:500~1000
Format	Clear, colorless solution in phosphate buffered saline, pH 7.2 .
Storage	Store at -20°C or lower. Aliquot to avoid repeated freezing and thawing.
Precautions	SAMM50 Antibody (monoclonal) (M04) is for research use only and not for use in diagnostic or therapeutic procedures.

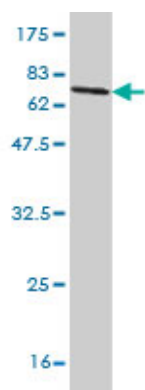
Background

SAMM50 is a component of the sorting and assembly machinery (SAM) complex of the outer mitochondrial membrane. The SAM complex has a role in integrating beta-barrel proteins into the outer mitochondrial membrane (Humphries et al., 2005 [PubMed 15644312]).

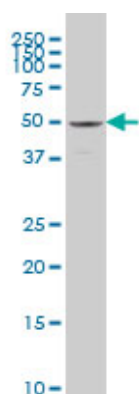
References

1. Plasticity of TOM complex assembly in skeletal muscle mitochondria in response to chronic contractile activity. Joseph AM, Hood DA. Mitochondrion. 2011 Nov 25.

Images



Antibody Reactive Against Recombinant Protein. Western Blot detection against Immunogen (77.22 KDa) .



SAMM50 monoclonal antibody (M04), clone 2A9 Western Blot analysis of SAMM50 expression in A-431 ((Cat # AT3770a)

Please note: All products are 'FOR RESEARCH USE ONLY. NOT FOR USE IN DIAGNOSTIC OR THERAPEUTIC PROCEDURES'.