

# SAV1 Antibody (monoclonal) (M02)

Mouse monoclonal antibody raised against a partial recombinant SAV1.

Catalog # AT3774a

## Product Information

---

<b>Application</b>	WB, IF, IP, E
<b>Primary Accession</b>	<a href="#">Q9H4B6</a>
<b>Other Accession</b>	<a href="#">NM_021818</a>
<b>Reactivity</b>	Human
<b>Host</b>	mouse
<b>Clonality</b>	monoclonal
<b>Isotype</b>	IgG2a Kappa
<b>Clone Names</b>	3B2
<b>Calculated MW</b>	44634

## Additional Information

---

<b>Gene ID</b>	60485
<b>Other Names</b>	Protein salvador homolog 1, 45 kDa WW domain protein, hWW45, SAV1, WW45
<b>Target/Specificity</b>	SAV1 (NP_068590, 300 a.a. ~ 383 a.a) partial recombinant protein with GST tag. MW of the GST tag alone is 26 KDa.
<b>Dilution</b>	WB~~1:500~1000 IF~~1:50~200 IP~~N/A E~~N/A
<b>Format</b>	Clear, colorless solution in phosphate buffered saline, pH 7.2 .
<b>Storage</b>	Store at -20°C or lower. Aliquot to avoid repeated freezing and thawing.
<b>Precautions</b>	SAV1 Antibody (monoclonal) (M02) is for research use only and not for use in diagnostic or therapeutic procedures.

## Background

---

WW domain-containing proteins are found in all eukaryotes and play an important role in the regulation of a wide variety of cellular functions such as protein degradation, transcription, and RNA splicing. This gene encodes a protein which contains 2 WW domains and a coiled-coil region. It is ubiquitously expressed in adult tissues. The encoded protein is 94% identical to the mouse protein at the amino acid level.

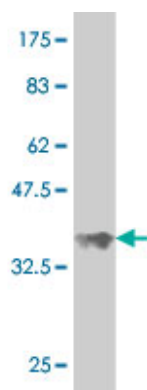
## References

---

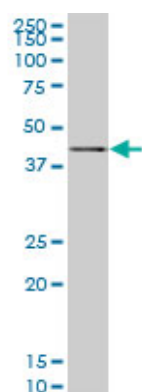
1.Hippo signaling mediates proliferation, invasiveness and metastatic potential of clear cell renal cell carcinoma.Schutte U, Bisht S, Heukamp LC, Kebschull M, Florin A, Haarmann J, Hoffmann P, Bendas G,

Buettner R, Brossart P, Feldmann G. Translational Oncology Volume 7, Issue 2, April 2014, Pages 309–3212. Screening of binding proteins that interact with human Salvador 1 in a human fetal liver cDNA library by the yeast two-hybrid system. Li X, Luo X, Li Z, Wang G, Xiao H, Tao D, Gong J, Hu J. Mol Biol Rep. 2012 May 9;3. Mammalian Ste20-Like Kinase and SAV1 Promote 3T3-L1 Adipocyte Differentiation by Activation of PPAR $\alpha$ . Park BH, Kim DS, Won GW, Jeon HJ, Oh BC, Lee Y, Kim EG, Lee YH. PLoS One. 2012;7(1):e30983. Epub 2012 Jan 26. 4. LATS2 Is a Tumor Suppressor Gene of Malignant Mesothelioma. Murakami H, Mizuno T, Taniguchi T, Fujii M, Ishiguro F, Fukui T, Akatsuka S, Horio Y, Hida T, Kondo Y, Toyokuni S, Osada H, Sekido Y. Cancer Res. 2011 Feb 1;71(3):873-83. Epub 2011 Jan 18. 5. Components of the Hippo pathway cooperate with Nek2 kinase to regulate centrosome disjunction. Mardin BR, Lange C, Baxter JE, Hardy T, Scholz SR, Fry AM, Schiebel E. Nat Cell Biol. 2010 Dec;12(12):1166-76. Epub 2010 Nov 14.

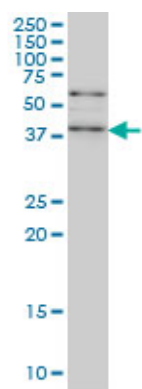
## Images



Antibody Reactive Against Recombinant Protein. Western Blot detection against Immunogen (34.98 KDa) .

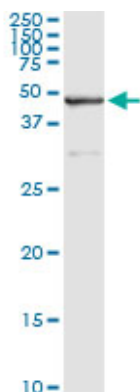
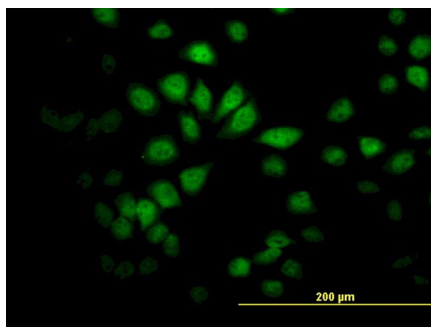


SAV1 monoclonal antibody (M02), clone 3B2. Western Blot analysis of SAV1 expression in HepG2 (Cat # AT3774a )

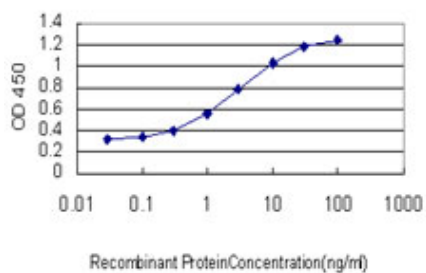


SAV1 monoclonal antibody (M02), clone 3B2 Western Blot analysis of SAV1 expression in HeLa S3 NE (Cat # AT3774a )

Immunofluorescence of monoclonal antibody to SAV1 on HeLa cell. [antibody concentration 60 ug/ml]



Immunoprecipitation of SAV1 transfected lysate using anti-SAV1 monoclonal antibody and Protein A Magnetic Bead ([U0007](#)), and immunoblotted with SAV1 MaxPab rabbit polyclonal antibody.



Detection limit for recombinant GST tagged SAV1 is approximately 0.1 ng/ml as a capture antibody.

Please note: All products are 'FOR RESEARCH USE ONLY. NOT FOR USE IN DIAGNOSTIC OR THERAPEUTIC PROCEDURES'.