

SC65 Antibody (monoclonal) (M01)

Mouse monoclonal antibody raised against a partial recombinant SC65.

Catalog # AT3776a

Product Information

Application	WB
Primary Accession	Q92791
Other Accession	NM_006455
Reactivity	Human
Host	mouse
Clonality	monoclonal
Isotype	IgG2a Kappa
Clone Names	1.0E+12
Calculated MW	50381

Additional Information

Gene ID	10609
Other Names	Synaptonemal complex protein SC65, Leprecan-like protein 4, Nucleolar autoantigen No55, LEPREL4, NOL55, SC65
Target/Specificity	SC65 (NP_006446, 270 a.a. ~ 379 a.a) partial recombinant protein with GST tag. MW of the GST tag alone is 26 KDa.
Dilution	WB~~1:500~1000
Format	Clear, colorless solution in phosphate buffered saline, pH 7.2 .
Storage	Store at -20°C or lower. Aliquot to avoid repeated freezing and thawing.
Precautions	SC65 Antibody (monoclonal) (M01) is for research use only and not for use in diagnostic or therapeutic procedures.

Background

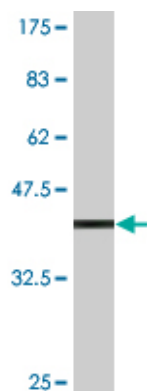
This nucleolar protein was first characterized because it was an autoantigen in cases on interstitial cystitis. The protein, with a predicted molecular weight of 50 kDa, appears to be localized in the particulate compartment of the interphase nucleolus, with a distribution distinct from that of nucleolar protein B23. During mitosis it is associated with chromosomes.

References

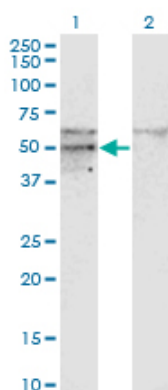
Insulin-dependent interactions of proteins with GLUT4 revealed through stable isotope labeling by amino acids in cell culture (SILAC). Foster LJ, et al. J Proteome Res, 2006 Jan. PMID 16396496. The status, quality,

and expansion of the NIH full-length cDNA project: the Mammalian Gene Collection (MGC). Gerhard DS, et al. Genome Res, 2004 Oct. PMID 15489334. Complete sequencing and characterization of 21,243 full-length human cDNAs. Ota T, et al. Nat Genet, 2004 Jan. PMID 14702039. Generation and initial analysis of more than 15,000 full-length human and mouse cDNA sequences. Strausberg RL, et al. Proc Natl Acad Sci U S A, 2002 Dec 24. PMID 12477932. Identification of nucleolar protein No55 as a tumour-associated autoantigen in patients with prostate cancer. Foss? A, et al. Br J Cancer, 2000 Sep. PMID 10952778.

Images



Antibody Reactive Against Recombinant Protein. Western Blot detection against Immunogen (37.84 KDa) .



Western Blot analysis of SC65 expression in transfected 293T cell line by SC65 monoclonal antibody (M01), clone 1E12.

Lane 1: SC65 transfected lysate (Predicted MW: 50.381 KDa).

Lane 2: Non-transfected lysate.

Please note: All products are 'FOR RESEARCH USE ONLY. NOT FOR USE IN DIAGNOSTIC OR THERAPEUTIC PROCEDURES'.