

# SCAND1 Antibody (monoclonal) (M01)

Mouse monoclonal antibody raised against a full length recombinant SCAND1.

Catalog # AT3778a

## Product Information

---

Application	WB, IF, E
Primary Accession	<a href="#">P57086</a>
Other Accession	<a href="#">BC036709</a>
Reactivity	Human
Host	mouse
Clonality	monoclonal
Isotype	IgG2b Kappa
Clone Names	2F11
Calculated MW	19082

## Additional Information

---

Gene ID	51282
Other Names	SCAN domain-containing protein 1, SCAND1, SDP1
Target/Specificity	SCAND1 (AAH36709, 1 a.a. ~ 179 a.a) full-length recombinant protein with GST tag. MW of the GST tag alone is 26 KDa.
Dilution	WB~~1:500~1000 IF~~1:50~200 E~~N/A
Format	Clear, colorless solution in phosphate buffered saline, pH 7.2 .
Storage	Store at -20°C or lower. Aliquot to avoid repeated freezing and thawing.
Precautions	SCAND1 Antibody (monoclonal) (M01) is for research use only and not for use in diagnostic or therapeutic procedures.

## Background

---

The SCAN domain is a highly conserved, leucine-rich motif of approximately 60 aa originally found within a subfamily of zinc finger proteins. This gene belongs to a family of genes that encode an isolated SCAN domain, but no zinc finger motif. Functional studies have established that the SCAN box is a protein interaction domain that mediates both hetero- and homoprotein associations, and maybe involved in regulation of transcriptional activity. Two transcript variants with different 5' UTRs, but encoding the same protein, have been described for this gene.

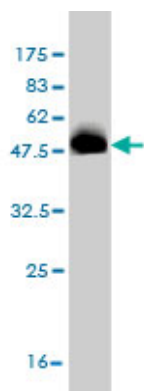
## References

---

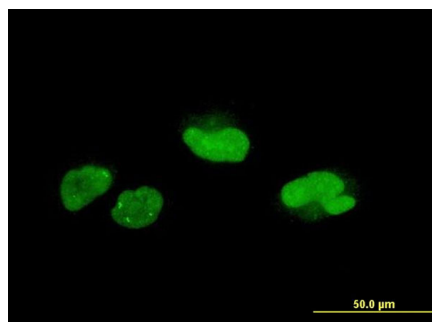
Multiple genetic variants along candidate pathways influence plasma high-density lipoprotein cholesterol

concentrations. Lu Y, et al. J Lipid Res, 2008 Dec. PMID 18660489. Spectroscopic characterization of the tumor antigen NY-REN-21 and identification of heterodimer formation with SCAND1. Carneiro FR, et al. Biochem Biophys Res Commun, 2006 Apr 28. PMID 16540086. The LIFEdb database in 2006. Mehrle A, et al. Nucleic Acids Res, 2006 Jan 1. PMID 16381901. Towards a proteome-scale map of the human protein-protein interaction network. Rual JF, et al. Nature, 2005 Oct 20. PMID 16189514. From ORFeome to biology: a functional genomics pipeline. Wiemann S, et al. Genome Res, 2004 Oct. PMID 15489336.

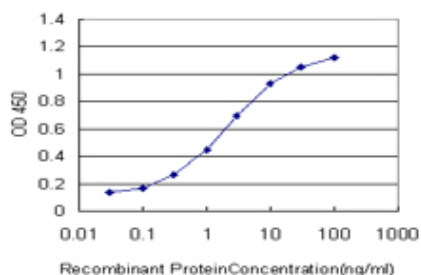
## Images



Antibody Reactive Against Recombinant Protein. Western Blot detection against Immunogen (45.43 kDa) .



Immunofluorescence of monoclonal antibody to SCAND1 on HeLa cell . [antibody concentration 10 μg/ml]



Detection limit for recombinant GST tagged SCAND1 is approximately 0.1 ng/ml as a capture antibody.

Please note: All products are 'FOR RESEARCH USE ONLY. NOT FOR USE IN DIAGNOSTIC OR THERAPEUTIC PROCEDURES'.