

# SCAND2 Antibody (monoclonal) (M02)

Mouse monoclonal antibody raised against a partial recombinant SCAND2.

Catalog # AT3780a

## Product Information

---

<b>Application</b>	WB, IF
<b>Primary Accession</b>	<a href="#">Q9GZW5</a>
<b>Other Accession</b>	<a href="#">NM_022050</a>
<b>Reactivity</b>	Human
<b>Host</b>	mouse
<b>Clonality</b>	monoclonal
<b>Isotype</b>	IgG1 Kappa
<b>Clone Names</b>	5F1
<b>Calculated MW</b>	34217

## Additional Information

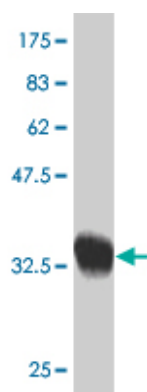
---

<b>Other Names</b>	Putative SCAN domain-containing protein SCAND2P, SCAN domain-containing protein 2 pseudogene, SCAND2P, SCAND2
<b>Target/Specificity</b>	SCAND2 (NP_071333, 1 a.a. ~ 62 a.a) partial recombinant protein with GST tag. MW of the GST tag alone is 26 KDa.
<b>Dilution</b>	WB~~1:500~1000 IF~~1:50~200
<b>Format</b>	Clear, colorless solution in phosphate buffered saline, pH 7.2 .
<b>Storage</b>	Store at -20°C or lower. Aliquot to avoid repeated freezing and thawing.
<b>Precautions</b>	SCAND2 Antibody (monoclonal) (M02) is for research use only and not for use in diagnostic or therapeutic procedures.

## Images

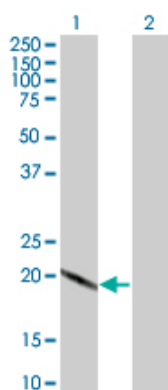
---

Antibody Reactive Against Recombinant Protein.Western  
Blot detection against Immunogen (32.56 KDa) .



Western Blot analysis of SCAND2 expression in transfected 293T cell line by SCAND2 monoclonal antibody (M02), clone 5F1.

Lane 1: SCAND2 transfected lysate(18 KDa).  
Lane 2: Non-transfected lysate.



Immunofluorescence of monoclonal antibody to SCAND2 on HeLa cell . [antibody concentration 10 ug/ml]

Please note: All products are 'FOR RESEARCH USE ONLY. NOT FOR USE IN DIAGNOSTIC OR THERAPEUTIC PROCEDURES'.