

SCARA3 Antibody (monoclonal) (M01)

Mouse monoclonal antibody raised against a partial recombinant SCARA3.

Catalog # AT3783a

Product Information

| | |
|--------------------------|---------------------------|
| Application | WB, E |
| Primary Accession | Q6AZY7 |
| Other Accession | NM_016240 |
| Reactivity | Human, Mouse, Rat |
| Host | mouse |
| Clonality | monoclonal |
| Isotype | IgG2a Kappa |
| Clone Names | 3A2 |
| Calculated MW | 65137 |

Additional Information

| | |
|---------------------------|--|
| Gene ID | 51435 |
| Other Names | Scavenger receptor class A member 3, Cellular stress response gene protein, SCARA3, CSR |
| Target/Specificity | SCARA3 (NP_057324, 316 a.a. ~ 415 a.a) partial recombinant protein with GST tag. MW of the GST tag alone is 26 KDa. |
| Dilution | WB~~1:500~1000 E~~N/A |
| Format | Clear, colorless solution in phosphate buffered saline, pH 7.2 . |
| Storage | Store at -20°C or lower. Aliquot to avoid repeated freezing and thawing. |
| Precautions | SCARA3 Antibody (monoclonal) (M01) is for research use only and not for use in diagnostic or therapeutic procedures. |

Background

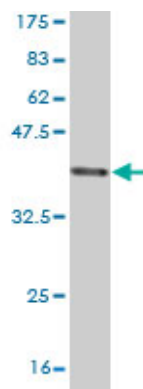
This gene encodes a macrophage scavenger receptor-like protein. This protein has been shown to deplete reactive oxygen species, and thus play an important role in protecting cells from oxidative stress. The expression of this gene is induced by oxidative stress. Alternatively spliced transcript variants encoding distinct isoforms have been described.

References

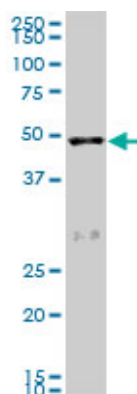
Common polymorphisms in ITGA2, PON1 and THBS2 are associated with coronary atherosclerosis in a candidate gene association study of the Chinese Han population. Wang Y, et al. J Hum Genet, 2010 Aug.

PMID 20485444.CSR1 induces cell death through inactivation of CPSF3. Zhu ZH, et al. Oncogene, 2009 Jan 8. PMID 18806823.CSR1 suppresses tumor growth and metastasis of prostate cancer. Yu G, et al. Am J Pathol, 2006 Feb. PMID 16436673.The status, quality, and expansion of the NIH full-length cDNA project: the Mammalian Gene Collection (MGC). Gerhard DS, et al. Genome Res, 2004 Oct. PMID 15489334.Generation and initial analysis of more than 15,000 full-length human and mouse cDNA sequences. Strausberg RL, et al. Proc Natl Acad Sci U S A, 2002 Dec 24. PMID 12477932.

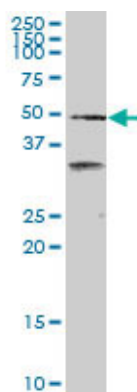
Images



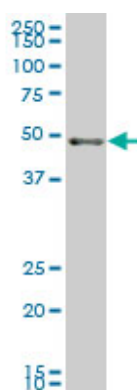
Antibody Reactive Against Recombinant Protein.Western Blot detection against Immunogen (36.74 KDa) .



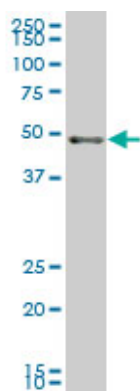
SCARA3 monoclonal antibody (M01), clone 3A2. Western Blot analysis of SCARA3 expression in PC-12((Cat # AT3783a)



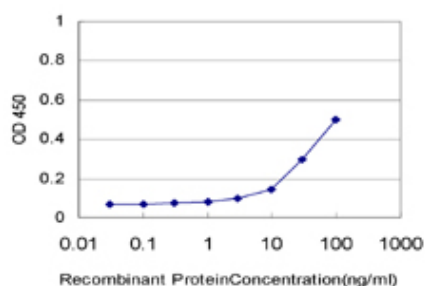
SCARA3 monoclonal antibody (M01), clone 3A2. Western Blot analysis of SCARA3 expression in HepG2 ((Cat # AT3783a)



SCARA3 monoclonal antibody (M01), clone 3A2 Western Blot analysis of SCARA3 expression in IMR-32 ((Cat # AT3783a)



SCARA3 monoclonal antibody (M01), clone 3A2 Western Blot analysis of SCARA3 expression in NIH/3T3 ((Cat # AT3783a)



Detection limit for recombinant GST tagged SCARA3 is approximately 3ng/ml as a capture antibody.

Please note: All products are 'FOR RESEARCH USE ONLY. NOT FOR USE IN DIAGNOSTIC OR THERAPEUTIC PROCEDURES'.