

SCYE1 Antibody (monoclonal) (M02)

Mouse monoclonal antibody raised against a full length recombinant SCYE1.

Catalog # AT3796a

Product Information

Application	IF, E
Primary Accession	Q12904
Other Accession	BC014051
Reactivity	Human
Host	mouse
Clonality	monoclonal
Isotype	IgG1 kappa
Clone Names	M1
Calculated MW	34353

Additional Information

Gene ID	9255
Other Names	Aminoacyl tRNA synthase complex-interacting multifunctional protein 1, Multisynthase complex auxiliary component p43, Endothelial monocyte-activating polypeptide 2, EMAP-2, Endothelial monocyte-activating polypeptide II, EMAP-II, Small inducible cytokine subfamily E member 1, AIMP1, EMAP2, SCYE1
Target/Specificity	SCYE1 (AAH14051, 1 a.a. ~ 312 a.a) full-length recombinant protein with GST tag. MW of the GST tag alone is 26 KDa.
Dilution	IF~~10ug/ml E~~N/A
Format	Clear, colorless solution in phosphate buffered saline, pH 7.2 .
Storage	Store at -20°C or lower. Aliquot to avoid repeated freezing and thawing.
Precautions	SCYE1 Antibody (monoclonal) (M02) is for research use only and not for use in diagnostic or therapeutic procedures.

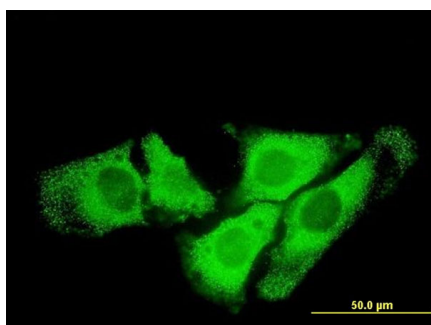
Background

The protein encoded by this gene is a cytokine that is specifically induced by apoptosis, and it is involved in the control of angiogenesis, inflammation, and wound healing. The release of this cytokine renders the tumor-associated vasculature sensitive to tumor necrosis factor. The precursor protein is identical to the p43 subunit, which is associated with the multi-tRNA synthetase complex, and it modulates aminoacylation activity of tRNA synthetase in normal cells. This protein is also involved in the stimulation of inflammatory responses after proteolytic cleavage in tumor cells. Multiple transcript variants encoding different isoforms have been found for this gene. A pseudogene has been identified on chromosome 20.

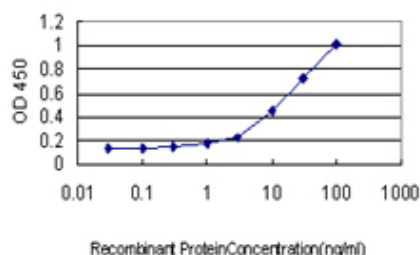
References

Toll-like receptor 4-mediated c-Jun N-terminal kinase activation induces gp96 cell surface expression via AIMP1 phosphorylation. Kim G, et al. Biochem Biophys Res Commun, 2010 Jun 18. PMID 20510162. Autoantibodies against aminoacyl-tRNA synthetase: novel diagnostic marker for type 1 diabetes mellitus. Park SG, et al. Biomarkers, 2010 Jun. PMID 20429837. Cell death-mediated cleavage of the attraction signal p43 in human atherosclerosis: implications for plaque destabilization. Martinet W, et al. Arterioscler Thromb Vasc Biol, 2010 Jul. PMID 20413730. A systematic gene-based screen of chr4q22-q32 identifies association of a novel susceptibility gene, DKK2, with the quantitative trait of alcohol dependence symptom counts. Kalsi G, et al. Hum Mol Genet, 2010 Jun 15. PMID 20332099. Deciphering the immune function and regulation by a TLR of the cytokine EMAP2 in the lesioned central nervous system using a leech model. Schikorski D, et al. J Immunol, 2009 Dec 1. PMID 19917687.

Images



Immunofluorescence of monoclonal antibody to SCYE1 on HeLa cell . [antibody concentration 10 ug/ml]



Detection limit for recombinant GST tagged SCYE1 is approximately 1 ng/ml as a capture antibody.

Please note: All products are 'FOR RESEARCH USE ONLY. NOT FOR USE IN DIAGNOSTIC OR THERAPEUTIC PROCEDURES'.