

SCYL1 Antibody (monoclonal) (M02)

Mouse monoclonal antibody raised against a partial recombinant SCYL1.

Catalog # AT3798a

Product Information

Application	WB, E
Primary Accession	Q96KG9
Other Accession	BC009967
Reactivity	Human, Mouse, Rat
Host	mouse
Clonality	monoclonal
Isotype	IgG2a Kappa
Clone Names	2E6
Calculated MW	89631

Additional Information

Gene ID	57410
Other Names	N-terminal kinase-like protein, Coated vesicle-associated kinase of 90 kDa, SCY1-like protein 1, Telomerase regulation-associated protein, Telomerase transcriptional element-interacting factor, Teratoma-associated tyrosine kinase, SCYL1, CVAK90, GKLP, NTKL, TAPK, TEIF, TRAP
Target/Specificity	SCYL1 (AAH09967, 373 a.a. ~ 472 a.a) partial recombinant protein with GST tag. MW of the GST tag alone is 26 KDa.
Dilution	WB~~1:500~1000 E~~N/A
Format	Clear, colorless solution in phosphate buffered saline, pH 7.2 .
Storage	Store at -20°C or lower. Aliquot to avoid repeated freezing and thawing.
Precautions	SCYL1 Antibody (monoclonal) (M02) is for research use only and not for use in diagnostic or therapeutic procedures.

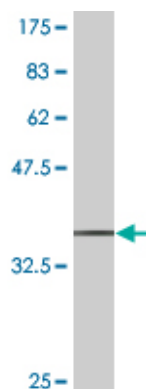
Background

This gene encodes a transcriptional regulator belonging to the SCY1-like family of kinase-like proteins. The protein has a divergent N-terminal kinase domain that is thought to be catalytically inactive, and can bind specific DNA sequences through its C-terminal domain. It activates transcription of the telomerase reverse transcriptase and DNA polymerase beta genes. The protein has been localized to the nucleus, and also to the cytoplasm and centrosomes during mitosis. Multiple transcript variants encoding different isoforms have been found for this gene.

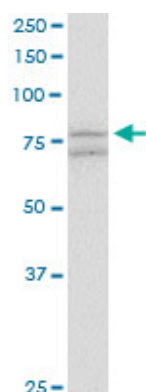
References

1. Identification of Tyrosine-Phosphorylated Proteins Associated with Lung Cancer Metastasis using Label-Free Quantitative Analyses. Wu HY, Tseng VS, Chen LC, Chang HY, Chuang IC, Tsay YG, Liao PC. J Proteome Res. 2010 Jun 23. [Epub ahead of print]

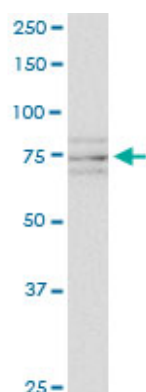
Images



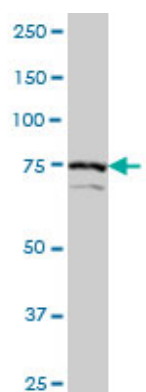
Antibody Reactive Against Recombinant Protein. Western Blot detection against Immunogen (36.63 KDa) .



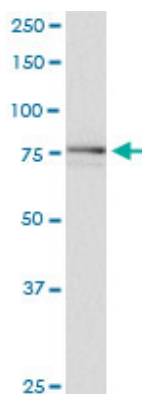
SCYL1 monoclonal antibody (M02), clone 2E5. Western Blot analysis of SCYL1 expression in human ovarian cancer.



SCYL1 monoclonal antibody (M02), clone 2E5. Western Blot analysis of SCYL1 expression in PC-12.



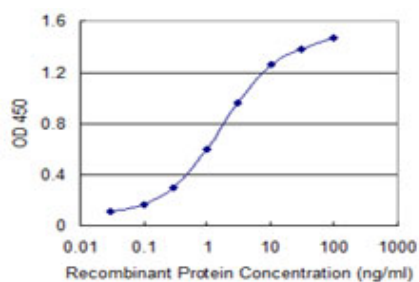
SCYL1 monoclonal antibody (M02), clone 2E5. Western Blot analysis of SCYL1 expression in HeLa S3 NE (Cat # AT3798a)



SCYL1 monoclonal antibody (M02), clone 2E5. Western Blot analysis of SCYL1 expression in A-431.



SCYL1 monoclonal antibody (M02), clone 2E5. Western Blot analysis of SCYL1 expression in NIH/3T3.



Detection limit for recombinant GST tagged SCYL1 is 0.03 ng/ml as a capture antibody.

Please note: All products are 'FOR RESEARCH USE ONLY. NOT FOR USE IN DIAGNOSTIC OR THERAPEUTIC PROCEDURES'.