

SDCBP2 Antibody (monoclonal) (M01)

Mouse monoclonal antibody raised against a full length recombinant SDCBP2.

Catalog # AT3800a

Product Information

Application	WB
Primary Accession	Q9H190
Other Accession	BC002727
Reactivity	Human
Host	mouse
Clonality	monoclonal
Isotype	IgG2b kappa
Clone Names	3E9
Calculated MW	31594

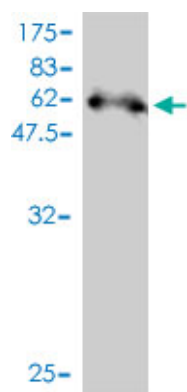
Additional Information

Gene ID	27111
Other Names	Syntenin-2, Syndecan-binding protein 2, SDCBP2, SITAC18
Target/Specificity	SDCBP2 (AAH02727, 1 a.a. ~ 292 a.a) full-length recombinant protein with GST tag. MW of the GST tag alone is 26 KDa.
Dilution	WB~~1:500~1000
Format	Clear, colorless solution in phosphate buffered saline, pH 7.2 .
Storage	Store at -20°C or lower. Aliquot to avoid repeated freezing and thawing.
Precautions	SDCBP2 Antibody (monoclonal) (M01) is for research use only and not for use in diagnostic or therapeutic procedures.

References

Identification of intrahepatic cholangiocarcinoma related genes by comparison with normal liver tissues using expressed sequence tags. Wang AG, et al. Biochem Biophys Res Commun, 2006 Jul 7. PMID 16712791. Diversification of transcriptional modulation: large-scale identification and characterization of putative alternative promoters of human genes. Kimura K, et al. Genome Res, 2006 Jan. PMID 16344560. Towards a proteome-scale map of the human protein-protein interaction network. Rual JF, et al. Nature, 2005 Oct 20. PMID 16189514. The status, quality, and expansion of the NIH full-length cDNA project: the Mammalian Gene Collection (MGC). Gerhard DS, et al. Genome Res, 2004 Oct. PMID 15489334. Complete sequencing and characterization of 21,243 full-length human cDNAs. Ota T, et al. Nat Genet, 2004 Jan. PMID 14702039.

Images



Antibody Reactive Against Recombinant Protein. Western Blot detection against Immunogen (57.86 KDa) .

Please note: All products are 'FOR RESEARCH USE ONLY. NOT FOR USE IN DIAGNOSTIC OR THERAPEUTIC PROCEDURES'.