

SDF2 Antibody (monoclonal) (M01)

Mouse monoclonal antibody raised against a full length recombinant SDF2.

Catalog # AT3801a

Product Information

Application	WB, IHC, E
Primary Accession	Q99470
Other Accession	BC000500
Reactivity	Human
Host	mouse
Clonality	monoclonal
Isotype	IgG1 Kappa
Clone Names	3G7-1D6
Calculated MW	23026

Additional Information

Gene ID	6388
Other Names	Stromal cell-derived factor 2, SDF-2, SDF2
Target/Specificity	SDF2 (AAH00500.1, 20 a.a. ~ 211 a.a) full-length recombinant protein with GST tag. MW of the GST tag alone is 26 KDa.
Dilution	WB~~1:500~1000 IHC~~1:100~500 E~~N/A
Format	Clear, colorless solution in phosphate buffered saline, pH 7.2 .
Storage	Store at -20°C or lower. Aliquot to avoid repeated freezing and thawing.
Precautions	SDF2 Antibody (monoclonal) (M01) is for research use only and not for use in diagnostic or therapeutic procedures.

Background

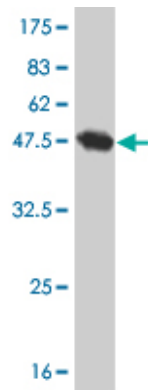
The protein encoded by this gene is believed to be a secretory protein. It has regions of similarity to hydrophilic segments of yeast mannosyltransferases. Its expression is ubiquitous and the gene appears to be relatively conserved among mammals.

References

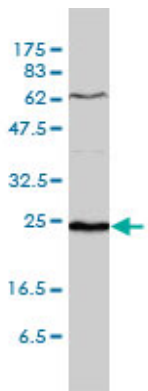
Defining the human deubiquitinating enzyme interaction landscape. Sowa ME, et al. Cell, 2009 Jul 23. PMID 19615732. Transcript analyses of stromal cell derived factors (SDFs): SDF-2, SDF-4 and SDF-5 reveal a different pattern of expression and prognostic association in human breast cancer. Kang H, et al. Int J Oncol, 2009 Jul. PMID 19513569. Phenotype-genotype interactions on renal function in type 2 diabetes: an analysis

using structural equation modelling. Song XY, et al. Diabetologia, 2009 Aug. PMID 19479237. The status, quality, and expansion of the NIH full-length cDNA project: the Mammalian Gene Collection (MGC). Gerhard DS, et al. Genome Res, 2004 Oct. PMID 15489334. Generation and initial analysis of more than 15,000 full-length human and mouse cDNA sequences. Strausberg RL, et al. Proc Natl Acad Sci U S A, 2002 Dec 24. PMID 12477932.

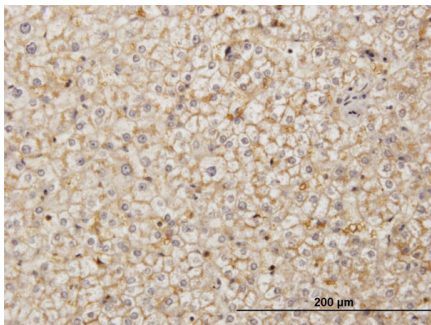
Images



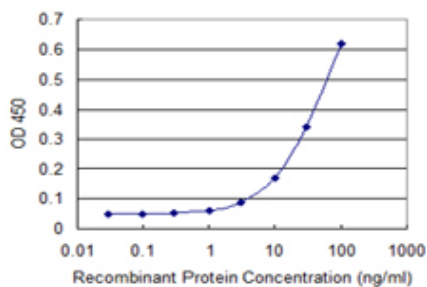
Antibody Reactive Against Recombinant Protein. Western Blot detection against Immunogen (46.75 KDa) .



SDF2 monoclonal antibody (M01), clone 3G7-1D6 Western Blot analysis of SDF2 expression in WI-38 (Cat # AT3801a)



Immunoperoxidase of monoclonal antibody to SDF2 on formalin-fixed paraffin-embedded human liver. [antibody concentration 3 ug/ml]



Detection limit for recombinant GST tagged SDF2 is 1 ng/ml as a capture antibody.

Please note: All products are 'FOR RESEARCH USE ONLY. NOT FOR USE IN DIAGNOSTIC OR THERAPEUTIC PROCEDURES'.