

# SEC22L1 Antibody (monoclonal) (M01)

Mouse monoclonal antibody raised against a partial recombinant SEC22L1.

Catalog # AT3805a

## Product Information

---

<b>Application</b>	WB, IF, E
<b>Primary Accession</b>	<a href="#">O75396</a>
<b>Other Accession</b>	<a href="#">NM_004892</a>
<b>Reactivity</b>	Human, Rat
<b>Host</b>	mouse
<b>Clonality</b>	monoclonal
<b>Isotype</b>	IgG2a Lambda
<b>Clone Names</b>	10
<b>Calculated MW</b>	24741

## Additional Information

---

<b>Gene ID</b>	9554
<b>Other Names</b>	Vesicle-trafficking protein SEC22b, ER-Golgi SNARE of 24 kDa, ERS-24, ERS24, SEC22 vesicle-trafficking protein homolog B, SEC22 vesicle-trafficking protein-like 1, SEC22B, SEC22L1
<b>Target/Specificity</b>	SEC22L1 (NP_004883, 1 a.a. ~ 110 a.a) partial recombinant protein with GST tag. MW of the GST tag alone is 26 KDa.
<b>Dilution</b>	WB~~1:500~1000 IF~~1:50~200 E~~N/A
<b>Format</b>	Clear, colorless solution in phosphate buffered saline, pH 7.2 .
<b>Storage</b>	Store at -20°C or lower. Aliquot to avoid repeated freezing and thawing.
<b>Precautions</b>	SEC22L1 Antibody (monoclonal) (M01) is for research use only and not for use in diagnostic or therapeutic procedures.

## Background

---

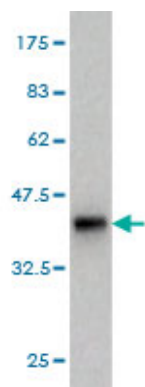
The protein encoded by this gene is a member of the SEC22 family of vesicle trafficking proteins. It seems to complex with SNARE and it is thought to play a role in the ER-Golgi protein trafficking. This protein has strong similarity to Mus musculus and Cricetulus griseus proteins.

## References

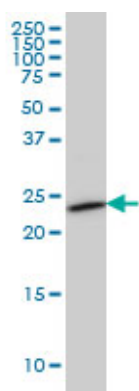
---

1.A VAMP7/Vti1a SNARE complex distinguishes a non-conventional traffic route to the cell surface used by KChIP1 and Kv4 potassium channels.Flowerdew SE, Burgoyne RD.Biochem J. 2009 Mar

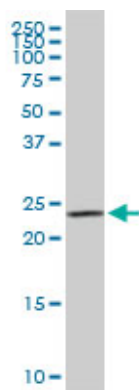
## Images



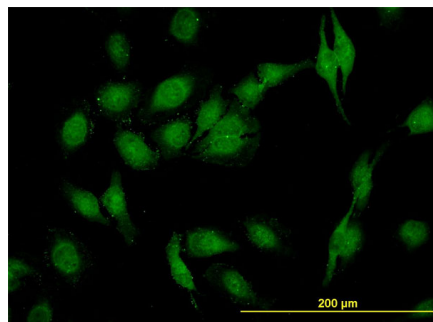
Antibody Reactive Against Recombinant Protein.Western Blot detection against Immunogen (37.84 KDa) .



SEC22L1 monoclonal antibody (M01), clone 1E1 Western Blot analysis of SEC22L1 expression in HeLa ( (Cat # AT3805a )

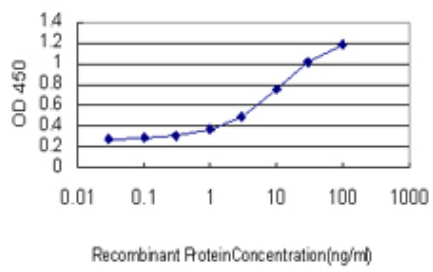


SEC22L1 monoclonal antibody (M01), clone 1E1. Western Blot analysis of SEC22L1 expression in PC-12 ( (Cat # AT3805a )



Immunofluorescence of monoclonal antibody to SEC22L1 on HeLa cell. [antibody concentration 10 ug/ml]

Detection limit for recombinant GST tagged SEC22L1 is approximately 0.3ng/ml as a capture antibody.



Please note: All products are 'FOR RESEARCH USE ONLY. NOT FOR USE IN DIAGNOSTIC OR THERAPEUTIC PROCEDURES'.