

# SEMA4D Antibody (monoclonal) (M01)

Mouse monoclonal antibody raised against a partial recombinant SEMA4D.

Catalog # AT3808a

## Product Information

---

<b>Application</b>	WB, E
<b>Primary Accession</b>	<a href="#">Q92854</a>
<b>Other Accession</b>	<a href="#">BC054500</a>
<b>Reactivity</b>	Human
<b>Host</b>	mouse
<b>Clonality</b>	monoclonal
<b>Isotype</b>	IgG1 Kappa
<b>Clone Names</b>	3B4
<b>Calculated MW</b>	96150

## Additional Information

---

<b>Gene ID</b>	10507
<b>Other Names</b>	Semaphorin-4D, A8, BB18, GR3, CD100, SEMA4D, C9orf164, CD100, SEMAJ
<b>Target/Specificity</b>	SEMA4D (AAH54500, 115 a.a. ~ 224 a.a) partial recombinant protein with GST tag. MW of the GST tag alone is 26 KDa.
<b>Dilution</b>	WB~~1:500~1000 E~~N/A
<b>Format</b>	Clear, colorless solution in phosphate buffered saline, pH 7.2 .
<b>Storage</b>	Store at -20°C or lower. Aliquot to avoid repeated freezing and thawing.
<b>Precautions</b>	SEMA4D Antibody (monoclonal) (M01) is for research use only and not for use in diagnostic or therapeutic procedures.

## References

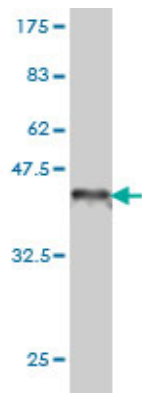
---

1. Phage Display Identification of CD100 in Human Atherosclerotic Plaque Macrophages and Foam Cells. Luque MC, Gutierrez PS, Debbas V, Martins WK, Puech-Leao P, Porto G, Coelho V, Boumsell L, Kalil J, Stolf BPLoS One. 2013 Sep 30;8(9):e75772. doi: 10.1371/journal.pone.0075772.

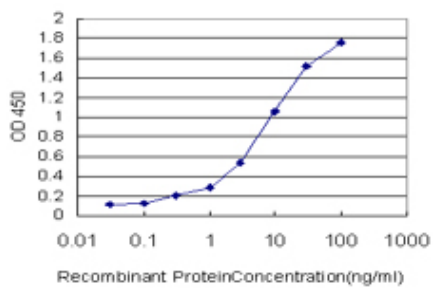
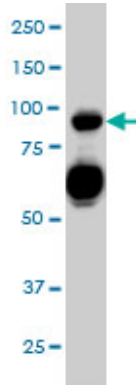
## Images

---

Antibody Reactive Against Recombinant Protein. Western Blot detection against Immunogen (37.73 KDa) .



SEMA4D monoclonal antibody (M01), clone 3B4 Western Blot analysis of SEMA4D expression in HL-60 ( (Cat # AT3808a )



Detection limit for recombinant GST tagged SEMA4D is approximately 0.3ng/ml as a capture antibody.

Please note: All products are 'FOR RESEARCH USE ONLY. NOT FOR USE IN DIAGNOSTIC OR THERAPEUTIC PROCEDURES'.