

## SEP10 Antibody (monoclonal) (M01)

Mouse monoclonal antibody raised against a full length recombinant SEPT10.

Catalog # AT3810a

### Product Information

---

<b>Application</b>	WB, IF, E
<b>Primary Accession</b>	<a href="#">Q9P0V9</a>
<b>Other Accession</b>	<a href="#">BC020502</a>
<b>Reactivity</b>	Human
<b>Host</b>	mouse
<b>Clonality</b>	monoclonal
<b>Isotype</b>	IgG1 Kappa
<b>Clone Names</b>	2A12
<b>Calculated MW</b>	52593

### Additional Information

---

<b>Gene ID</b>	151011
<b>Other Names</b>	Septin-10, SEPT10
<b>Target/Specificity</b>	SEPT10 (AAH20502, 1 a.a. ~ 454 a.a) full-length recombinant protein with GST tag. MW of the GST tag alone is 26 KDa.
<b>Dilution</b>	WB~~1:500~1000 IF~~1:50~200 E~~N/A
<b>Format</b>	Clear, colorless solution in phosphate buffered saline, pH 7.2 .
<b>Storage</b>	Store at -20°C or lower. Aliquot to avoid repeated freezing and thawing.
<b>Precautions</b>	SEP10 Antibody (monoclonal) (M01) is for research use only and not for use in diagnostic or therapeutic procedures.

### Background

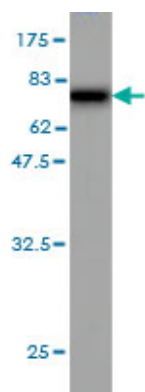
---

This gene encodes a member of the septin family of cytoskeletal proteins with GTPase activity. This protein localizes to the cytoplasm and nucleus and displays GTP-binding and GTPase activity. Alternate splicing results in two transcript variants encoding different isoforms.

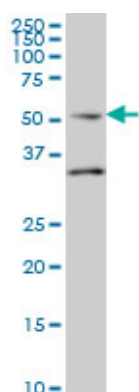
### References

---

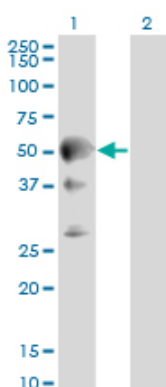
1.Identification of a novel role of Septin 10 in paclitaxel-resistance in cancers through a functional genomics screen.Xu M, Takanashi M, Oikawa K, Nishi H, Isaka K, Yoshimoto T, Ohyashiki J, Kuroda M.Cancer Sci. 2012 Apr;103(4):821-7. doi: 10.1111/j.1349-7006.2012.02221.x. Epub 2012 Mar 4.



Antibody Reactive Against Recombinant Protein. Western Blot detection against Immunogen (75.68 KDa) .

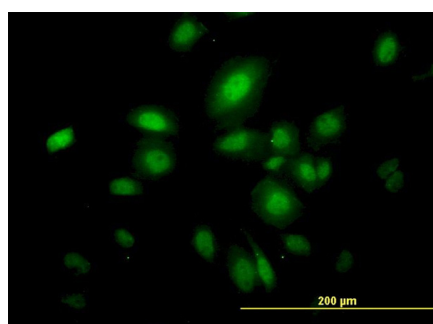


SEPT10 monoclonal antibody (M01), clone 2A12 Western Blot analysis of SEPT10 expression in U-2 OS ( (Cat # AT3810a )



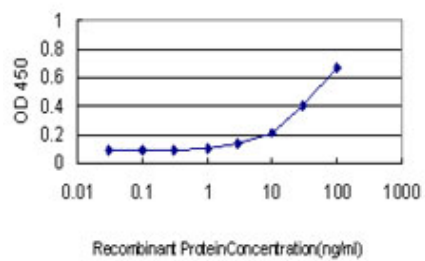
Western Blot analysis of SEPT10 expression in transfected 293T cell line by SEPT10 monoclonal antibody (M01), clone 2A12.

Lane 1: SEPT10 transfected lysate(52.6 KDa).  
Lane 2: Non-transfected lysate.



Immunofluorescence of monoclonal antibody to SEPT10 on HeLa cell. [antibody concentration 10 ug/ml]

Detection limit for recombinant GST tagged SEPT10 is approximately 1ng/ml as a capture antibody.



Please note: All products are 'FOR RESEARCH USE ONLY. NOT FOR USE IN DIAGNOSTIC OR THERAPEUTIC PROCEDURES'.