

SEP11 Antibody (monoclonal) (M02)

Mouse monoclonal antibody raised against a partial recombinant SEPT11.

Catalog # AT3812a

Product Information

Application	WB, E
Primary Accession	Q9NVA2
Other Accession	BC008083
Reactivity	Human
Host	mouse
Clonality	monoclonal
Isotype	IgG2b Lambda
Clone Names	1E6
Calculated MW	49398

Additional Information

Gene ID	55752
Other Names	Septin-11, SEPT11
Target/Specificity	SEPT11 (AAH08083, 71 a.a. ~ 180 a.a) partial recombinant protein with GST tag. MW of the GST tag alone is 26 KDa.
Dilution	WB~~1:500~1000 E~~N/A
Format	Clear, colorless solution in phosphate buffered saline, pH 7.2 .
Storage	Store at -20°C or lower. Aliquot to avoid repeated freezing and thawing.
Precautions	SEP11 Antibody (monoclonal) (M02) is for research use only and not for use in diagnostic or therapeutic procedures.

Background

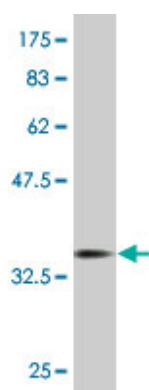
SEPT11 belongs to the conserved septin family of filament-forming cytoskeletal GTPases that are involved in a variety of cellular functions including cytokinesis and vesicle trafficking (Hanai et al., 2004 [PubMed 15196925]; Nagata et al., 2004 [PubMed 15485874]).

References

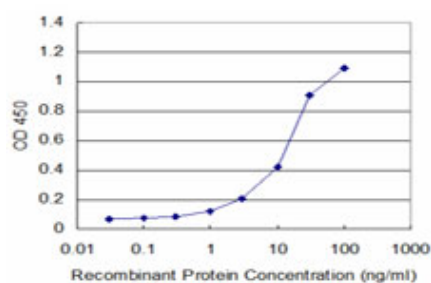
LOH analysis of genes around D4S2964 identifies ARD1B as a prognostic predictor of hepatocellular carcinoma. Huang GL, et al. World J Gastroenterol, 2010 Apr 28. PMID 20419844. Personalized smoking cessation: interactions between nicotine dose, dependence and quit-success genotype score. Rose JE, et al. Mol Med, 2010 Jul-Aug. PMID 20379614. Septin 11 restricts InlB-mediated invasion by Listeria. Mostowy S, et

al. J Biol Chem, 2009 Apr 24. PMID 19234302. GTP binding is required for SEPT12 to form filaments and to interact with SEPT11. Ding X, et al. Mol Cells, 2008 May 31. PMID 18443421. Toward a confocal subcellular atlas of the human proteome. Barbe L, et al. Mol Cell Proteomics, 2008 Mar. PMID 18029348.

Images



Antibody Reactive Against Recombinant Protein. Western Blot detection against Immunogen (37.73 KDa) .



Detection limit for recombinant GST tagged SEPT11 is approximately 1ng/ml as a capture antibody.

Please note: All products are 'FOR RESEARCH USE ONLY. NOT FOR USE IN DIAGNOSTIC OR THERAPEUTIC PROCEDURES'.