

# SERPINA12 Antibody (monoclonal) (M01)

Mouse monoclonal antibody raised against a full length recombinant SERPINA12.

Catalog # AT3817a

## Product Information

---

|                          |                          |
|--------------------------|--------------------------|
| <b>Application</b>       | WB, IP, E                |
| <b>Primary Accession</b> | <a href="#">Q8IW75</a>   |
| <b>Other Accession</b>   | <a href="#">BC040857</a> |
| <b>Reactivity</b>        | Human                    |
| <b>Host</b>              | mouse                    |
| <b>Clonality</b>         | monoclonal               |
| <b>Isotype</b>           | IgG2a Kappa              |
| <b>Clone Names</b>       | 3B3                      |
| <b>Calculated MW</b>     | 47175                    |

## Additional Information

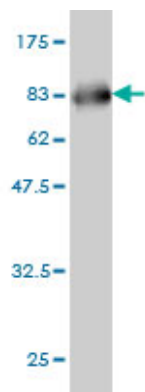
---

|                           |   |
|---------------------------|---|
| <b>Gene ID</b>            | 145264  |
| <b>Other Names</b>        | Serpin A12, OL-64, Visceral adipose tissue-derived serine protease inhibitor, Vaspin, Visceral adipose-specific serpin, SERPINA12 |
| <b>Target/Specificity</b> | SERPINA12 (AAH40857, 1 a.a. ~ 414 a.a) full-length recombinant protein with GST tag. MW of the GST tag alone is 26 KDa.           |
| <b>Dilution</b>           | WB~~1:500~1000 IP~~N/A E~~N/A   |
| <b>Format</b>             | Clear, colorless solution in phosphate buffered saline, pH 7.2 .  |
| <b>Storage</b>            | Store at -20°C or lower. Aliquot to avoid repeated freezing and thawing.  |
| <b>Precautions</b>        | SERPINA12 Antibody (monoclonal) (M01) is for research use only and not for use in diagnostic or therapeutic procedures.           |

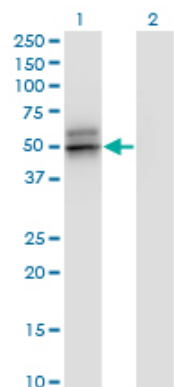
## References

---

Variation at the NFATC2 Locus Increases the Risk of Thiazolinedinedione-Induced Edema in the Diabetes REduction Assessment with ramipril and rosiglitazone Medication (DREAM) Study. Bailey SD, et al. Diabetes Care, 2010 Jul 13. PMID 20628086. Personalized smoking cessation: interactions between nicotine dose, dependence and quit-success genotype score. Rose JE, et al. Mol Med, 2010 Jul-Aug. PMID 20379614. Circadian rhythm of serum vaspin in healthy male volunteers: relation to meals. Jeong E, et al. J Clin Endocrinol Metab, 2010 Apr. PMID 20156923. Serum chemerin and vaspin in non-alcoholic fatty liver disease. Kukla M, et al. Scand J Gastroenterol, 2010. PMID 20095887. Association between serum vaspin concentrations and visceral adipose tissue in Korean subjects. Chang HM, et al. Metabolism, 2010 Sep. PMID 20060144.

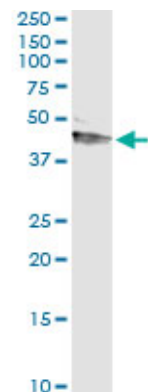


Antibody Reactive Against Recombinant Protein.Western Blot detection against Immunogen (71.28 KDa) .

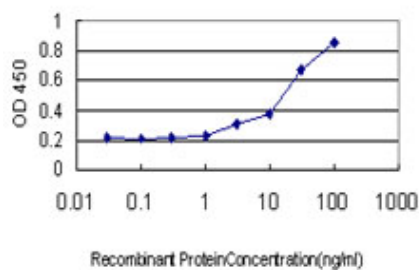


Western Blot analysis of SERPINA12 expression in transfected 293T cell line by SERPINA12 monoclonal antibody (M01), clone 3B3.

Lane 1: SERPINA12 transfected lysate(47.2 KDa).  
Lane 2: Non-transfected lysate.



Immunoprecipitation of SERPINA12 transfected lysate using anti-SERPINA12 monoclonal antibody and Protein A Magnetic Bead ([U0007](#)), and immunoblotted with SERPINA12 MaxPab rabbit polyclonal antibody.



Detection limit for recombinant GST tagged SERPINA12 is approximately 3ng/ml as a capture antibody.

Please note: All products are 'FOR RESEARCH USE ONLY. NOT FOR USE IN DIAGNOSTIC OR THERAPEUTIC PROCEDURES'.