

SERPINA6 Antibody (monoclonal) (M04)

Mouse monoclonal antibody raised against a full length recombinant SERPINA6.

Catalog # AT3820a

Product Information

Application	WB, E
Primary Accession	P08185
Other Accession	BC058021
Reactivity	Human
Host	mouse
Clonality	monoclonal
Isotype	IgG1 Kappa
Clone Names	3B12
Calculated MW	45141

Additional Information

Gene ID	866
Other Names	Corticosteroid-binding globulin, CBG, Serpin A6, Transcortin, SERPINA6, CBG
Target/Specificity	SERPINA6 (AAH58021, 23 a.a. ~ 405 a.a) full-length recombinant protein with GST tag. MW of the GST tag alone is 26 KDa.
Dilution	WB~~1:500~1000 E~~N/A
Format	Clear, colorless solution in phosphate buffered saline, pH 7.2 .
Storage	Store at -20°C or lower. Aliquot to avoid repeated freezing and thawing.
Precautions	SERPINA6 Antibody (monoclonal) (M04) is for research use only and not for use in diagnostic or therapeutic procedures.

Background

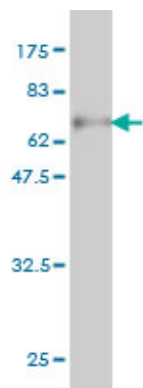
This gene encodes an alpha-globulin protein with corticosteroid-binding properties. This is the major transport protein for glucocorticoids and progestins in the blood of most vertebrates. The gene localizes to a chromosomal region containing several closely related serine protease inhibitors which may have evolved by duplication events.

References

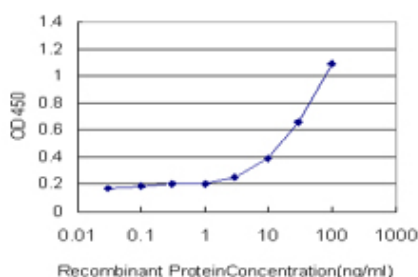
Variation at the NFATC2 Locus Increases the Risk of Thiazolinedione-Induced Edema in the Diabetes REduction Assessment with ramipril and rosiglitazone Medication (DREAM) Study. Bailey SD, et al. Diabetes Care, 2010 Jul 13. PMID 20628086. Genetic variation in neuroendocrine genes associates with somatic

symptoms in the general population: results from the EPIFUND study. Holliday KL, et al. J Psychosom Res, 2010 May. PMID 20403506. Personalized smoking cessation: interactions between nicotine dose, dependence and quit-success genotype score. Rose JE, et al. Mol Med, 2010 Jul-Aug. PMID 20379614. Plasma sex hormone-binding globulin, corticosteroid-binding globulin, cortisol, and free cortisol levels in outpatients attending a lipid disorders clinic: a cross-sectional study of 1137 subjects. Lewis JG, et al. Horm Metab Res, 2010 Apr. PMID 20354921. Effect of mutations of the human serpin protein corticosteroid-binding globulin on cortisol-binding, thermal and protease sensitivity. Braun BC, et al. J Steroid Biochem Mol Biol, 2010 May. PMID 20226861.

Images



Antibody Reactive Against Recombinant Protein. Western Blot detection against Immunogen (67.87 KDa) .



Detection limit for recombinant GST tagged SERPINA6 is approximately 1 ng/ml as a capture antibody.

Please note: All products are 'FOR RESEARCH USE ONLY. NOT FOR USE IN DIAGNOSTIC OR THERAPEUTIC PROCEDURES'.