

SERPINB2 Antibody (monoclonal) (M08)

Mouse monoclonal antibody raised against a partial recombinant SERPINB2.

Catalog # AT3821a

Product Information

Application	WB, IP, E
Primary Accession	P05120
Other Accession	BC012609
Reactivity	Human
Host	mouse
Clonality	monoclonal
Isotype	IgG2b Kappa
Clone Names	3A9
Calculated MW	46596

Additional Information

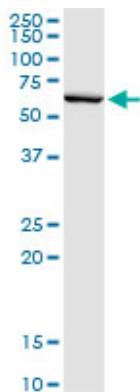
Gene ID	5055
Other Names	Plasminogen activator inhibitor 2, PAI-2, Monocyte Arg-serpin, Placental plasminogen activator inhibitor, Serpin B2, Urokinase inhibitor, SERPINB2, PAI2, PLANH2
Target/Specificity	SERPINB2 (AAH12609, 1 a.a. ~ 100 a.a) partial recombinant protein with GST tag. MW of the GST tag alone is 26 KDa.
Dilution	WB~~1:500~1000 IP~~N/A E~~N/A
Format	Clear, colorless solution in phosphate buffered saline, pH 7.2 .
Storage	Store at -20°C or lower. Aliquot to avoid repeated freezing and thawing.
Precautions	SERPINB2 Antibody (monoclonal) (M08) is for research use only and not for use in diagnostic or therapeutic procedures.

References

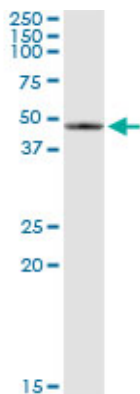
Evaluation of candidate stromal epithelial cross-talk genes identifies association between risk of serous ovarian cancer and TERT, a cancer susceptibility hot-spot. Johnatty SE, et al. PLoS Genet, 2010 Jul 8. PMID 20628624. Variation at the NFATC2 Locus Increases the Risk of Thiazolinedione-Induced Edema in the Diabetes REduction Assessment with ramipril and rosiglitazone Medication (DREAM) Study. Bailey SD, et al. Diabetes Care, 2010 Jul 13. PMID 20628086. Polymorphisms in innate immunity genes and risk of childhood leukemia. Han S, et al. Hum Immunol, 2010 Jul. PMID 20438785. Risk of meningioma and common variation in genes related to innate immunity. Rajaraman P, et al. Cancer Epidemiol Biomarkers Prev, 2010 May. PMID 20406964. Up-regulation of plasminogen activator inhibitor-2 is associated with high-risk HPV and grade of

cervical lesion at baseline but does not predict outcomes of high-risk HPV infections or incident CIN. Syrj nen S, et al. Am J Clin Pathol, 2009 Dec. PMID 19926580.

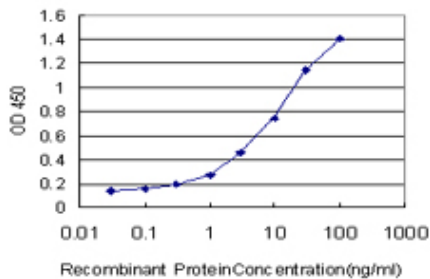
Images



SERPINB2 monoclonal antibody (M08), clone 3A9.
Western Blot analysis of SERPINB2 expression in human pancreas.



Immunoprecipitation of SERPINB2 transfected lysate using anti-SERPINB2 monoclonal antibody and Protein A Magnetic Bead ([U0007](#)), and immunoblotted with SERPINB2 MaxPab rabbit polyclonal antibody.



Detection limit for recombinant GST tagged SERPINB2 is approximately 0.3ng/ml as a capture antibody.

Please note: All products are 'FOR RESEARCH USE ONLY. NOT FOR USE IN DIAGNOSTIC OR THERAPEUTIC PROCEDURES'.