

SERPINB3 Antibody (monoclonal) (M01)

Mouse monoclonal antibody raised against a partial recombinant SERPINB3.

Catalog # AT3822a

Product Information

Application	WB, IP, E
Primary Accession	P29508
Other Accession	NM_006919
Reactivity	Human
Host	mouse
Clonality	monoclonal
Isotype	IgG2a Kappa
Clone Names	2F5
Calculated MW	44565

Additional Information

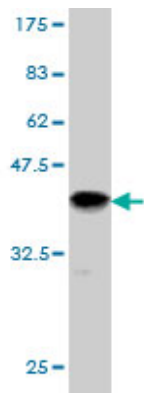
Gene ID	6317
Other Names	Serpin B3, Protein T4-A, Squamous cell carcinoma antigen 1, SCCA-1, SERPINB3, SCCA, SCCA1
Target/Specificity	SERPINB3 (NP_008850, 276 a.a. ~ 390 a.a) partial recombinant protein with GST tag. MW of the GST tag alone is 26 KDa.
Dilution	WB~~1:500~1000 IP~~N/A E~~N/A
Format	Clear, colorless solution in phosphate buffered saline, pH 7.2 .
Storage	Store at -20°C or lower. Aliquot to avoid repeated freezing and thawing.
Precautions	SERPINB3 Antibody (monoclonal) (M01) is for research use only and not for use in diagnostic or therapeutic procedures.

References

1.Label-Free Cancer Markers Detection by Capacitance Biochip.Carrara S, Bhalla V, Stagni C, Benini L, Ferretti A, Valle F, Gallotta A, Ricco B, Samori B.Sens. Actuators B: Chem. (2008), doi:10.1016/j.snb.2008.09.050

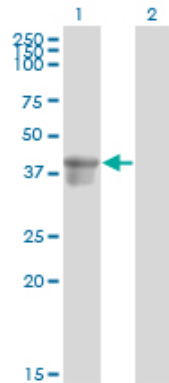
Images

Antibody Reactive Against Recombinant Protein.Western Blot detection against Immunogen (38.39 KDa) .

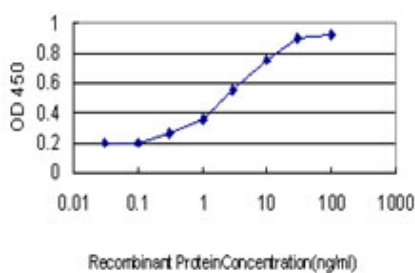
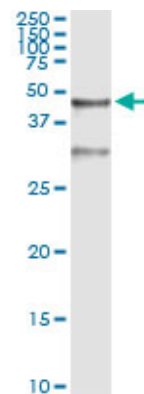


Western Blot analysis of SERPINB3 expression in transfected 293T cell line by SERPINB3 monoclonal antibody (M01), clone 2F5.

Lane 1: SERPINB3 transfected lysate(44.6 KDa).
Lane 2: Non-transfected lysate.



Immunoprecipitation of SERPINB3 transfected lysate using anti-SERPINB3 monoclonal antibody and Protein A Magnetic Bead ([U0007](#)), and immunoblotted with SERPINB3 MaxPab rabbit polyclonal antibody.



Detection limit for recombinant GST tagged SERPINB3 is approximately 0.3ng/ml as a capture antibody.

Please note: All products are 'FOR RESEARCH USE ONLY. NOT FOR USE IN DIAGNOSTIC OR THERAPEUTIC PROCEDURES'.