

# SERPINE1 Antibody (monoclonal) (M01)

Mouse monoclonal antibody raised against a partial recombinant SERPINE1.

Catalog # AT3824a

## Product Information

---

Application	WB, IP, E
Primary Accession	<a href="#">P05121</a>
Other Accession	<a href="#">NM_000602</a>
Reactivity	Human
Host	mouse
Clonality	monoclonal
Isotype	IgG2a Kappa
Clone Names	3F2
Calculated MW	45060

## Additional Information

---

Gene ID	5054
Other Names	Plasminogen activator inhibitor 1, PAI, PAI-1, Endothelial plasminogen activator inhibitor, Serpin E1, SERPINE1, PAI1, PLANH1
Target/Specificity	SERPINE1 (NP_000593, 86 a.a. ~ 185 a.a) partial recombinant protein with GST tag. MW of the GST tag alone is 26 KDa.
Dilution	WB~~1:500~1000 IP~~N/A E~~N/A
Format	Clear, colorless solution in phosphate buffered saline, pH 7.2 .
Storage	Store at -20°C or lower. Aliquot to avoid repeated freezing and thawing.
Precautions	SERPINE1 Antibody (monoclonal) (M01) is for research use only and not for use in diagnostic or therapeutic procedures.

## Background

---

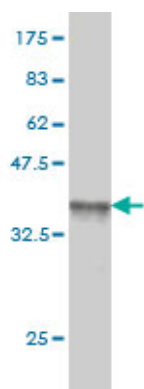
This gene encodes a member of the serine proteinase inhibitor (serpin) superfamily. This member is the principal inhibitor of tissue plasminogen activator (tPA) and urokinase (uPA), and hence is an inhibitor of fibrinolysis. Defects in this gene are the cause of plasminogen activator inhibitor-1 deficiency (PAI-1 deficiency), and high concentrations of the gene product are associated with thrombophilia. Alternatively spliced transcript variants encoding different isoforms have been found for this gene.

## References

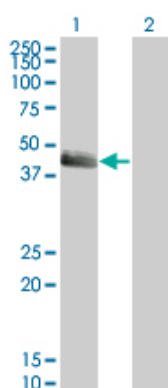
---

- 1.Extracellular Matrix Remodeling by Bone Marrow Fibroblast-like Cells Correlates with Disease Progression

## Images

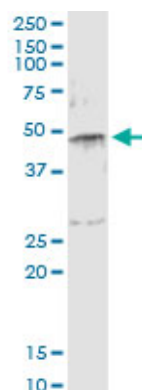


Antibody Reactive Against Recombinant Protein.Western Blot detection against Immunogen (36.63 KDa) .

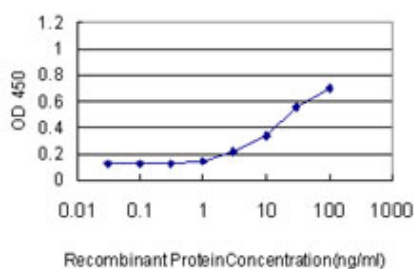


Western Blot analysis of SERPINE1 expression in transfected 293T cell line by SERPINE1 monoclonal antibody (M01), clone 3F2.

Lane 1: SERPINE1 transfected lysate(45.1 KDa).  
Lane 2: Non-transfected lysate.



Immunoprecipitation of SERPINE1 transfected lysate using anti-SERPINE1 monoclonal antibody and Protein A Magnetic Bead ([U0007](#)), and immunoblotted with SERPINE1 MaxPab rabbit polyclonal antibody.



Detection limit for recombinant GST tagged SERPINE1 is approximately 0.3ng/ml as a capture antibody.