

# SERPINH1 Antibody (monoclonal) (M01)

Mouse monoclonal antibody raised against a full length recombinant SERPINH1.

Catalog # AT3827a

## Product Information

---

<b>Application</b>	WB, E
<b>Primary Accession</b>	<a href="#">P50454</a>
<b>Other Accession</b>	<a href="#">BC014623</a>
<b>Reactivity</b>	Human, Rat
<b>Host</b>	mouse
<b>Clonality</b>	monoclonal
<b>Isotype</b>	IgG1 kappa
<b>Clone Names</b>	1D2-1A6
<b>Calculated MW</b>	46441

## Additional Information

---

<b>Gene ID</b>	871
<b>Other Names</b>	Serpin H1, 47 kDa heat shock protein, Arsenic-transactivated protein 3, AsTP3, Cell proliferation-inducing gene 14 protein, Collagen-binding protein, Colligin, Rheumatoid arthritis-related antigen RA-A47, SERPINH1, CBP1, CBP2, HSP47, SERPINH2
<b>Target/Specificity</b>	SERPINH1 (AAH14623.1, 1 a.a. ~ 418 a.a) full-length recombinant protein with GST tag. MW of the GST tag alone is 26 KDa.
<b>Dilution</b>	WB~~1:500~1000 E~~N/A
<b>Format</b>	Clear, colorless solution in phosphate buffered saline, pH 7.2 .
<b>Storage</b>	Store at -20°C or lower. Aliquot to avoid repeated freezing and thawing.
<b>Precautions</b>	SERPINH1 Antibody (monoclonal) (M01) is for research use only and not for use in diagnostic or therapeutic procedures.

## Background

---

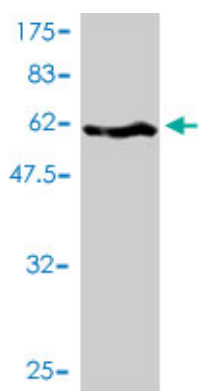
This gene encodes a member of the serpin superfamily of serine proteinase inhibitors. Its expression is induced by heat shock. The protein localizes to the endoplasmic reticulum lumen and binds collagen; thus it is thought to be a molecular chaperone involved in the maturation of collagen molecules. Autoantibodies to this protein have been found in patients with rheumatoid arthritis.

## References

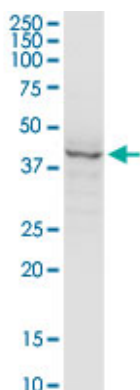
---

Comparison of the desmoplastic reaction and invading ability in invasive ductal carcinoma of the breast and prostatic adenocarcinoma based on the expression of heat shock protein 47 and fascin. Nese N, et al. Anal Quant Cytol Histol, 2010 Apr. PMID 20701077.Expression patterns of aurora kinase B, heat shock protein 47, and periostin in esophageal squamous cell carcinoma. Kwon YJ, et al. Oncol Res, 2009. PMID 20112500.An 8-gene signature, including methylated and down-regulated glutathione peroxidase 3, of gastric cancer. Zhang X, et al. Int J Oncol, 2010 Feb. PMID 20043075.High expression of HSP47 in ulcerative colitis-associated carcinomas: proteomic approach. Araki K, et al. Br J Cancer, 2009 Aug 4. PMID 19603022.Racial disparity in pathophysiologic pathways of preterm birth based on genetic variants. Menon R, et al. Reprod Biol Endocrinol, 2009 Jun 15. PMID 19527514.

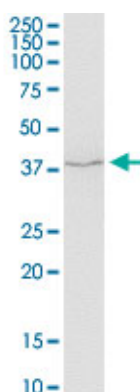
## Images



Antibody Reactive Against Recombinant Protein.Western Blot detection against Immunogen (71.72 KDa) .

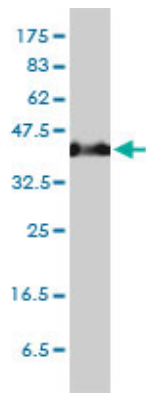


SERPINH1 monoclonal antibody (M01), clone S2. Western Blot analysis of SERPINH1 expression in human pancreas.

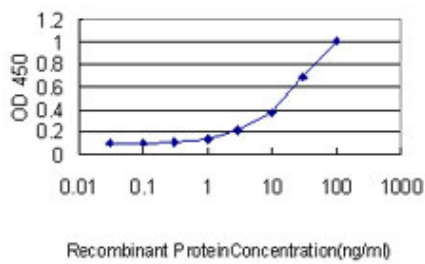
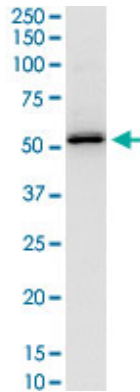


SERPINH1 monoclonal antibody (M01), clone S2. Western Blot analysis of SERPINH1 expression in rat brain.

SERPINH1 monoclonal antibody (M01), clone S2 Western Blot analysis of SERPINH1 expression in HeLa ( (Cat # AT3827a )



SERPINH1 monoclonal antibody (M01), clone S2. Western Blot analysis of SERPINH1 expression in MCF-7.



Detection limit for recombinant GST tagged SERPINH1 is approximately 0.1 ng/ml as a capture antibody.

Please note: All products are 'FOR RESEARCH USE ONLY. NOT FOR USE IN DIAGNOSTIC OR THERAPEUTIC PROCEDURES'.