

# SERPINI1 Antibody (monoclonal) (M01)

Mouse monoclonal antibody raised against a full length recombinant SERPINI1.

Catalog # AT3828a

## Product Information

---

<b>Application</b>	WB, IHC, E
<b>Primary Accession</b>	<a href="#">Q99574</a>
<b>Other Accession</b>	<a href="#">BC018043</a>
<b>Reactivity</b>	Human
<b>Host</b>	mouse
<b>Clonality</b>	monoclonal
<b>Isotype</b>	IgG1 Kappa
<b>Clone Names</b>	1D10
<b>Calculated MW</b>	46427

## Additional Information

---

<b>Gene ID</b>	5274
<b>Other Names</b>	Neuroserpin, Peptidase inhibitor 12, PI-12, Serpin I1, SERPINI1, PI12
<b>Target/Specificity</b>	SERPINI1 (AAH18043, 17 a.a. ~ 410 a.a) full-length recombinant protein with GST tag. MW of the GST tag alone is 26 KDa.
<b>Dilution</b>	WB~~1:500~1000 IHC~~1:100~500 E~~N/A
<b>Format</b>	Clear, colorless solution in phosphate buffered saline, pH 7.2 .
<b>Storage</b>	Store at -20°C or lower. Aliquot to avoid repeated freezing and thawing.
<b>Precautions</b>	SERPINI1 Antibody (monoclonal) (M01) is for research use only and not for use in diagnostic or therapeutic procedures.

## Background

---

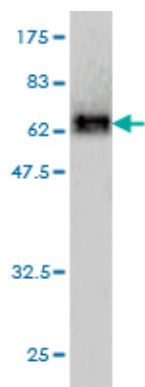
This gene encodes a member of the serpin superfamily of serine proteinase inhibitors. The protein is primarily secreted by axons in the brain, and preferentially reacts with and inhibits tissue-type plasminogen activator. It is thought to play a role in the regulation of axonal growth and the development of synaptic plasticity. Mutations in this gene result in familial encephalopathy with neuroserpin inclusion bodies (FENIB), which is a dominantly inherited form of familial encephalopathy and epilepsy characterized by the accumulation of mutant neuroserpin polymers. Multiple alternatively spliced variants, encoding the same protein, have been identified.

## References

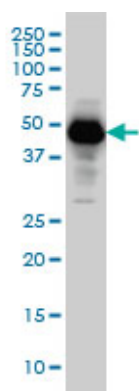
---

1. Proteomic analysis of podocyte exosome-enriched fraction from normal human urine. Prunotto M, Farina A, Lane L, Pernin A, Schifferli J, Hochstrasser DF, Lescuyer P, Moll S. *J Proteomics*. 2013 Jan 30. doi:pii: S1874-3919(13)00040-7. 10.1016/j.jprot.2013.01.012. [Epub ahead of print]

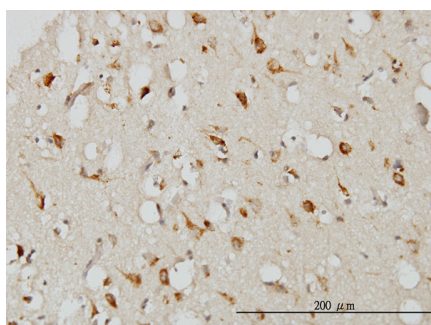
## Images



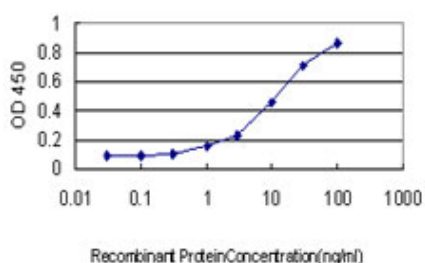
Antibody Reactive Against Recombinant Protein. Western Blot detection against Immunogen (69.08 KDa) .



SERPINI1 monoclonal antibody (M01), clone 1D10  
Western Blot analysis of SERPINI1 expression in HeLa (Cat # AT3828a)



Immunoperoxidase of monoclonal antibody to SERPINI1 on formalin-fixed paraffin-embedded human cerebral cortex. [antibody concentration 3 ug/ml]



Detection limit for recombinant GST tagged SERPINI1 is approximately 0.3ng/ml as a capture antibody.

Please note: All products are 'FOR RESEARCH USE ONLY. NOT FOR USE IN DIAGNOSTIC OR THERAPEUTIC PROCEDURES'.