

SERPINI1 Antibody (monoclonal) (M03)

Mouse monoclonal antibody raised against a full-length recombinant SERPINI1.

Catalog # AT3829a

Product Information

Application	WB, E
Primary Accession	Q99574
Other Accession	BC018043
Reactivity	Human
Host	mouse
Clonality	monoclonal
Isotype	IgG1 Kappa
Clone Names	1E11
Calculated MW	46427

Additional Information

Gene ID	5274
Other Names	Neuroserpin, Peptidase inhibitor 12, PI-12, Serpin I1, SERPINI1, PI12
Target/Specificity	SERPINI1 (AAH18043, 17 a.a. ~ 410 a.a) full-length recombinant protein with GST tag. MW of the GST tag alone is 26 KDa.
Dilution	WB~~1:500~1000 E~~N/A
Format	Clear, colorless solution in phosphate buffered saline, pH 7.2 .
Storage	Store at -20°C or lower. Aliquot to avoid repeated freezing and thawing.
Precautions	SERPINI1 Antibody (monoclonal) (M03) is for research use only and not for use in diagnostic or therapeutic procedures.

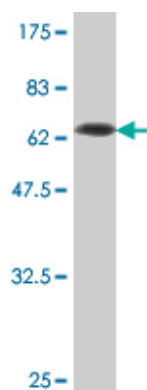
Background

This gene encodes a member of the serpin superfamily of serine proteinase inhibitors. The protein is primarily secreted by axons in the brain, and preferentially reacts with and inhibits tissue-type plasminogen activator. It is thought to play a role in the regulation of axonal growth and the development of synaptic plasticity. Mutations in this gene result in familial encephalopathy with neuroserpin inclusion bodies (FENIB), which is a dominantly inherited form of familial encephalopathy and epilepsy characterized by the accumulation of mutant neuroserpin polymers. Multiple alternatively spliced variants, encoding the same protein, have been identified.

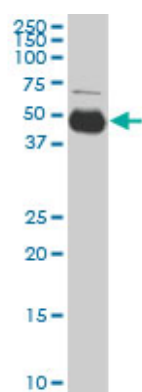
References

Polymorphisms in innate immunity genes and risk of childhood leukemia. Han S, et al. Hum Immunol, 2010 Jul. PMID 20438785. Risk of meningioma and common variation in genes related to innate immunity. Rajaraman P, et al. Cancer Epidemiol Biomarkers Prev, 2010 May. PMID 20406964. Neuroserpin polymers activate NF-kappaB by a calcium signaling pathway that is independent of the unfolded protein response. Davies MJ, et al. J Biol Chem, 2009 Jul 3. PMID 19423713. Common variation in genes related to innate immunity and risk of adult glioma. Rajaraman P, et al. Cancer Epidemiol Biomarkers Prev, 2009 May. PMID 19423540. Human neuroserpin: structure and time-dependent inhibition. Ricagno S, et al. J Mol Biol, 2009 Apr 24. PMID 19265707.

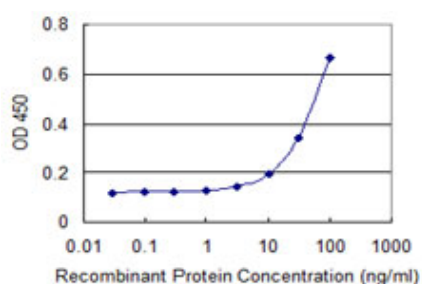
Images



Antibody Reactive Against Recombinant Protein. Western Blot detection against Immunogen (69.08 KDa) .



SERPINI1 monoclonal antibody (M03), clone 1E10. Western Blot analysis of SERPINI1 expression in HeLa (Cat # AT3829a)



Detection limit for recombinant GST tagged SERPINI1 is 3 ng/ml as a capture antibody.

Please note: All products are 'FOR RESEARCH USE ONLY. NOT FOR USE IN DIAGNOSTIC OR THERAPEUTIC PROCEDURES'.